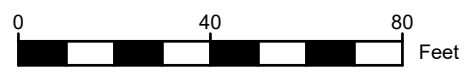
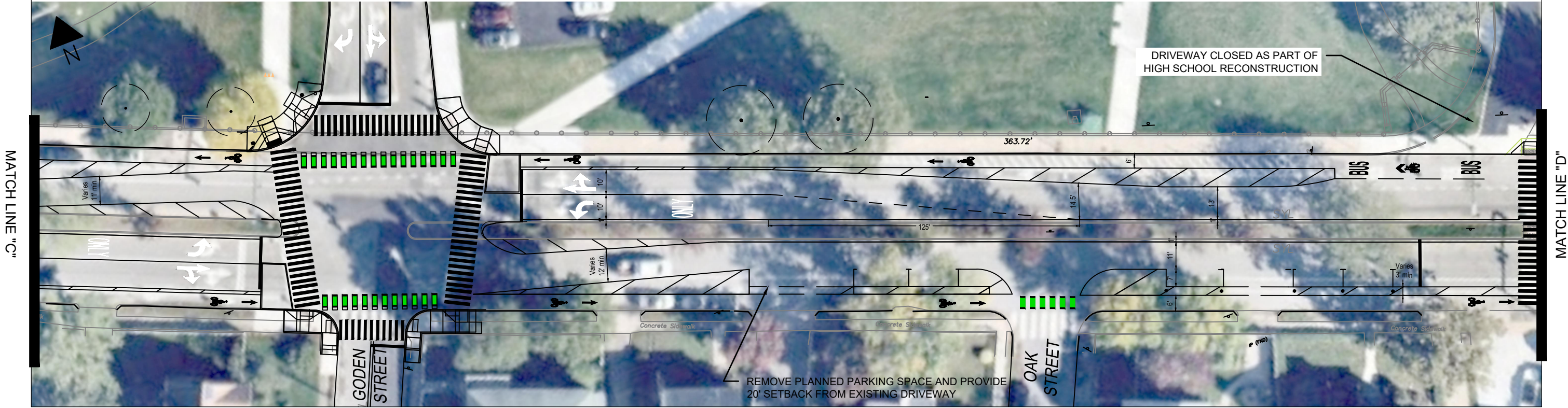


Concord Avenue Separated Bike Lanes
Belmont, Massachusetts
Sheet 01 of 05

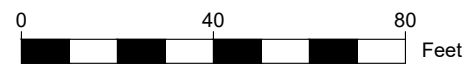
CONCEPTUAL
 NOT FOR CONSTRUCTION

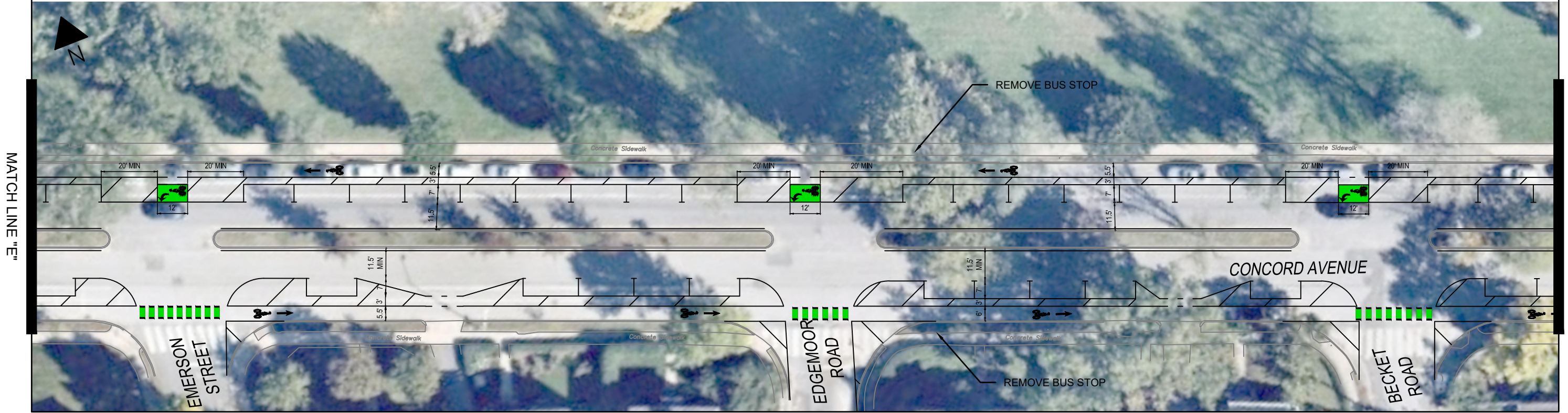




Concord Avenue Separated Bike Lanes
 Belmont, Massachusetts
 Sheet 02 of 05

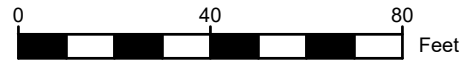
CONCEPTUAL
 NOT FOR CONSTRUCTION





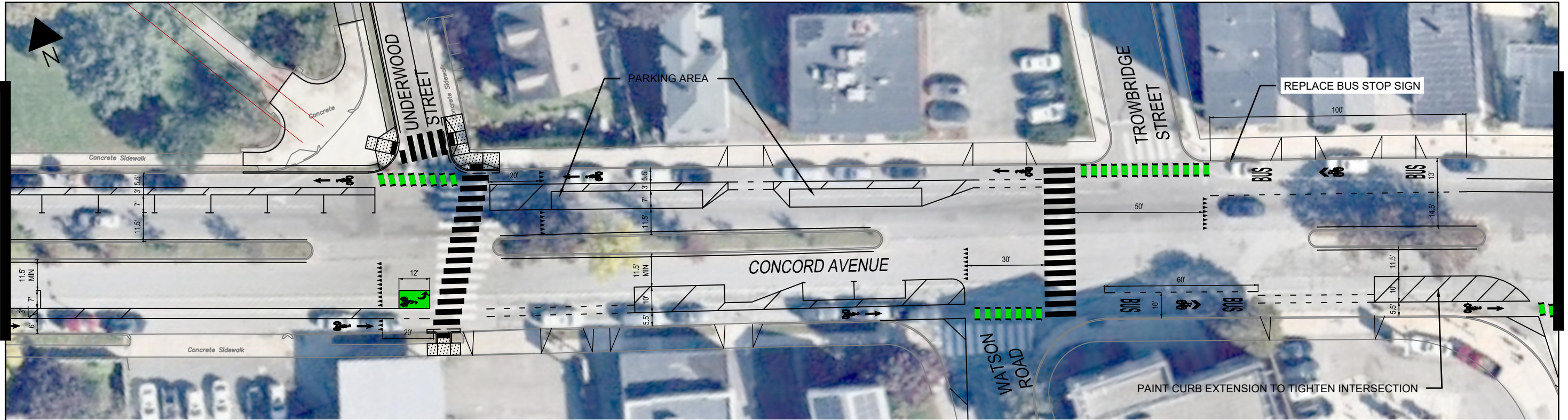
Concord Avenue Separated Bike Lanes
 Belmont, Massachusetts
 Sheet 03 of 05

CONCEPTUAL
 NOT FOR CONSTRUCTION



MATCH LINE "F"

MATCH LINE "G"



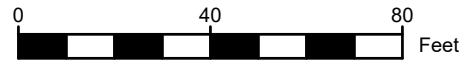
MATCH LINE "G"

MATCH LINE "H"

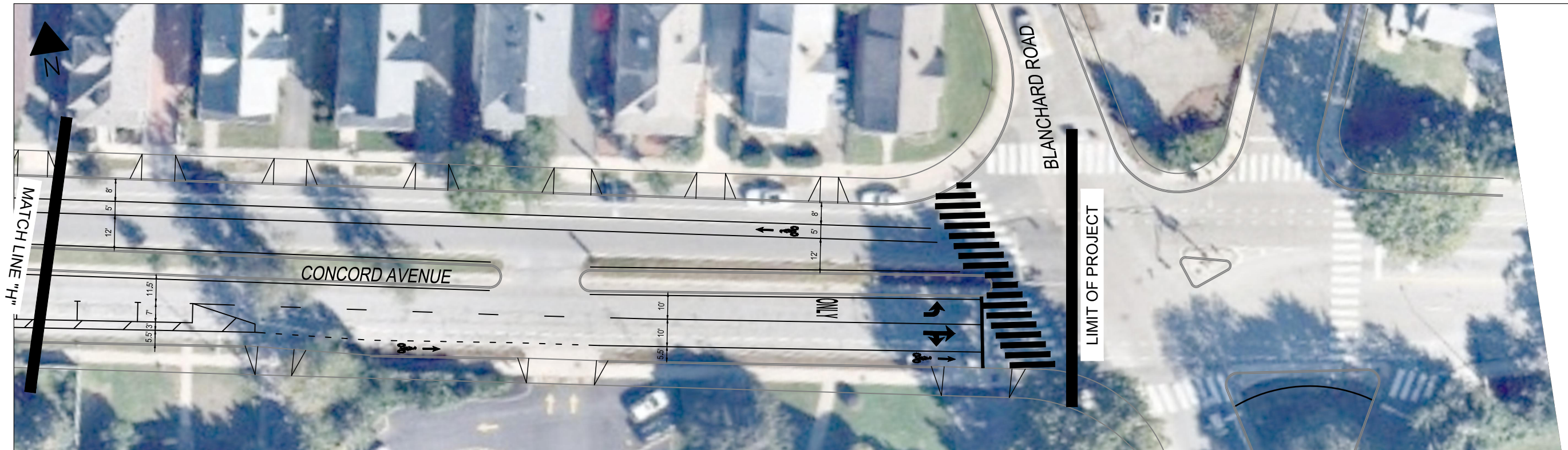


Concord Avenue Separated Bike Lanes
 Belmont, Massachusetts
 Sheet 04 of 05

CONCEPTUAL
 NOT FOR CONSTRUCTION



3 March 2022

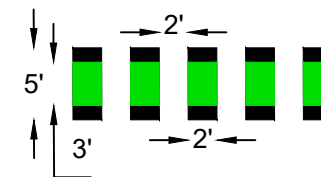


General Notes:

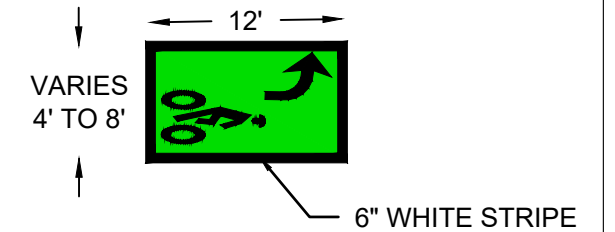
- Bus stop modification instructions are shown for community review. Sign changes may be implemented separately from striping plans
- 11.5' min distance between parking and median along entire corridor
- 5' min bike lane, 5.5' preferred along entire corridor except where called out to accommodate ADA loading zones
- 3' min buffer between parking and bike lane unless otherwise noted
- Install R1-5 signs at all locations where yield lines are proposed

Parking Notes:

- 7' width for parking stalls along buffered bike lane
- 22' length for parking stalls with 20' for end stalls unless otherwise noted
- Setback parking 20' min from intersections and driveways

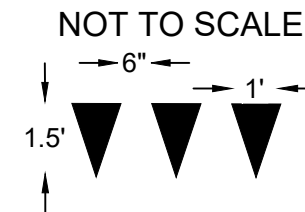


CROSS BICYCLE INTERSECTION MARKINGS ("CROSS BIKES")



TWO STAGE TURN BOX

NOT TO SCALE



YIELD LINES

NOT TO SCALE