

# **Post-Closure Use Alternatives for Concord Avenue Landfill Site**

Town of Belmont

Presentation to Board of Selectmen

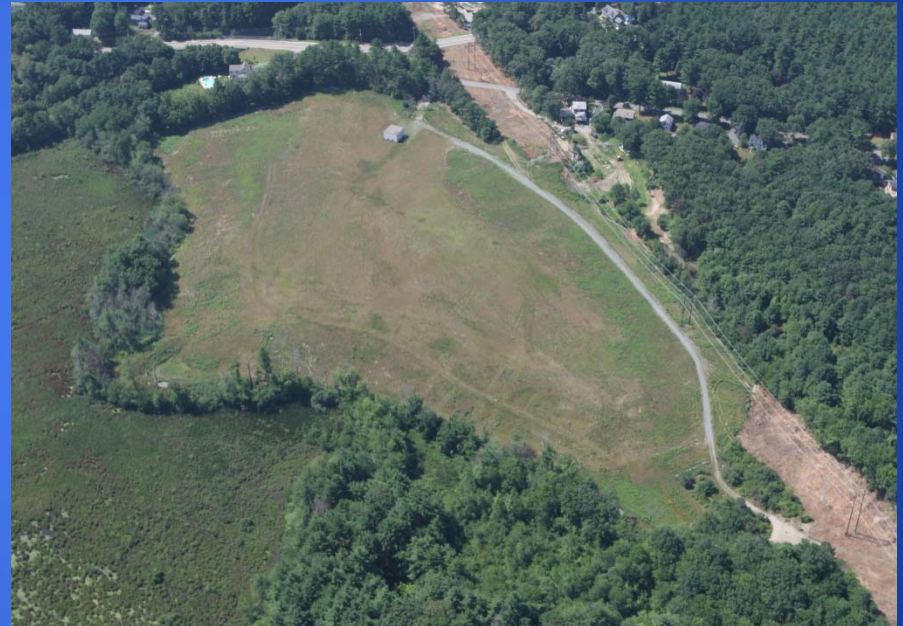
June 18, 2012

# Post-Closure Alternatives

- Based on March 5<sup>th</sup> meeting with BOS:
  - Passive recreation/open space
  - Active recreational fields
    - Combination rectangular and softball fields
    - Two softball fields – no shared outfield
    - One softball field and one baseball field (not enough room)
    - Two baseball fields (not enough room)
  - Solar Photovoltaic (PV) System
- All alternatives include portion of site set aside for public works operations

# Passive Recreation Alternative

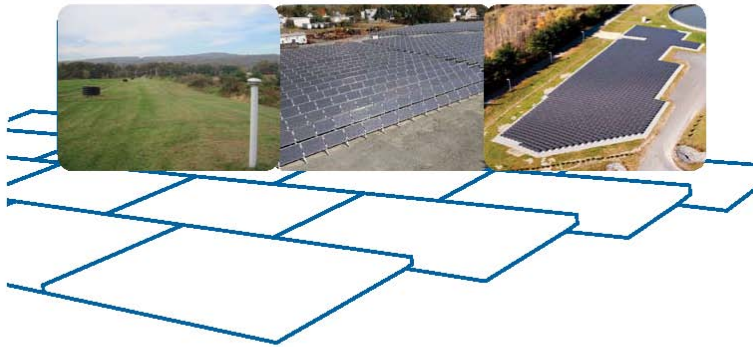
- Alternative cap likely
- Minimally developed with grassy pathways, parking and DPW uses
- Total estimated cost: \$3.5 (includes funds previously appropriated at May 2012 Town Meeting)



Lincoln Road Landfill, Walpole

# Solar PV Panel Installation

## The Guide to Developing Solar Photovoltaics at Massachusetts Landfills



- Preliminary estimates 1 MW rated output
- Requires Power Purchase Agreement between BMLD and private third party
- Not likely financially viable
- Requires RFP to evaluate viability further

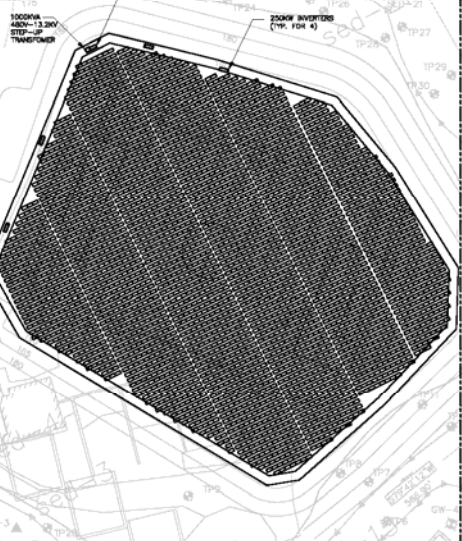


Commonwealth of Massachusetts  
Deval L. Patrick, Governor  
Timothy P. Murray, Lieutenant Governor  
Richard K. Sullivan Jr., Secretary





PANEL TYPE: SWITCH 250W  
 INVERTER TYPE: (4) SATCON POWERGATE PLUS 2500W  
 TOTAL ARRAY SIZE: 1013.200W  
 TOTAL NO. OF PANELS: 3618  
 NO. OF PANELS PER STRING: 11  
 GROUND MOUNTED AT 27 DEGREE



PHOTOVOLTAIC PLAN  
 PLAN  
 1" = 50'  
 0 10 20 30 40 50

ALL RIGHTS RESERVED. PROJECT SERVICES AND DESIGN PROVIDED BY PROFESSIONAL SERVICES, INCORPORATED HEREIN, ARE THE PROPERTY OF CDM SMITH AND ARE NOT TO BE USED, IN WHOLE OR IN PART, FOR ANY OTHER PROJECT WITHOUT THE WRITTEN AUTHORIZATION OF CDM SMITH.

REV	DATE	BY	CHKD	REMARKS

DESIGNED BY: \_\_\_\_\_  
 DRAWN BY: \_\_\_\_\_  
 CHECKED BY: \_\_\_\_\_  
 APPROVED BY: \_\_\_\_\_  
 DATE: JANUARY 2012



CONCORD AVENUE  
 BELMONT, MASSACHUSETTS

BELMONT  
 CONCEPTUAL PHOTOVOLTAIC PLAN

PROJECT NO. 10316-0003  
 FILE NAME: E001017E  
 SHEET NO. E-1

NOT FOR CONSTRUCTION

# Recreational Field(s) Alternatives

## Rectangular playing field with softball overlay\*

- Robust cap likely required
- Rectangular field (225' by 360')  
Softball overlay (250' foul line)
- Parking, security fences/gates, and DPW uses included
- Total estimated cost: \$5.2M\*\*

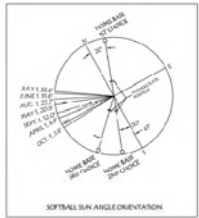
## Two softball fields for simultaneous play\*

- Robust cap likely required
- Two softball fields with distinct and separate outfields (200' foul line)
- Parking, security fences/gates, and DPW uses included
- Total estimated cost: \$5.4M\*\*

\* Optional items include: restroom facilities, artificial turf, field lighting, and field perimeter fencing

\*\* Includes funds previously appropriated at May 2012 Town Meeting





ALL RIGHTS RESERVED. NO PART OF THIS DOCUMENT IS TO BE REPRODUCED OR TRANSMITTED IN ANY FORM OR BY ANY MEANS, ELECTRONIC OR MECHANICAL, INCLUDING PHOTOCOPYING, RECORDING, OR BY ANY INFORMATION STORAGE AND RETRIEVAL SYSTEM, WITHOUT THE WRITTEN AUTHORIZATION OF CDM SMITH.

NO.	DATE	DESCRIPTION	BY

DESIGNED BY: \_\_\_\_\_  
 DRAWN BY: \_\_\_\_\_  
 CHECKED BY: \_\_\_\_\_  
 APPROVED BY: \_\_\_\_\_  
 DATE: 08/07/2013



CONCORD AVENUE  
 BELMONT, MASSACHUSETTS

CONCEPTUAL RE-USE PLAN  
 PUBLIC WORKS AND RECREATION

PROJECT NO. 100-6-61853  
 FILE NAME: 6X3501  
 SHEET NO. 2

NOT FOR CONSTRUCTION