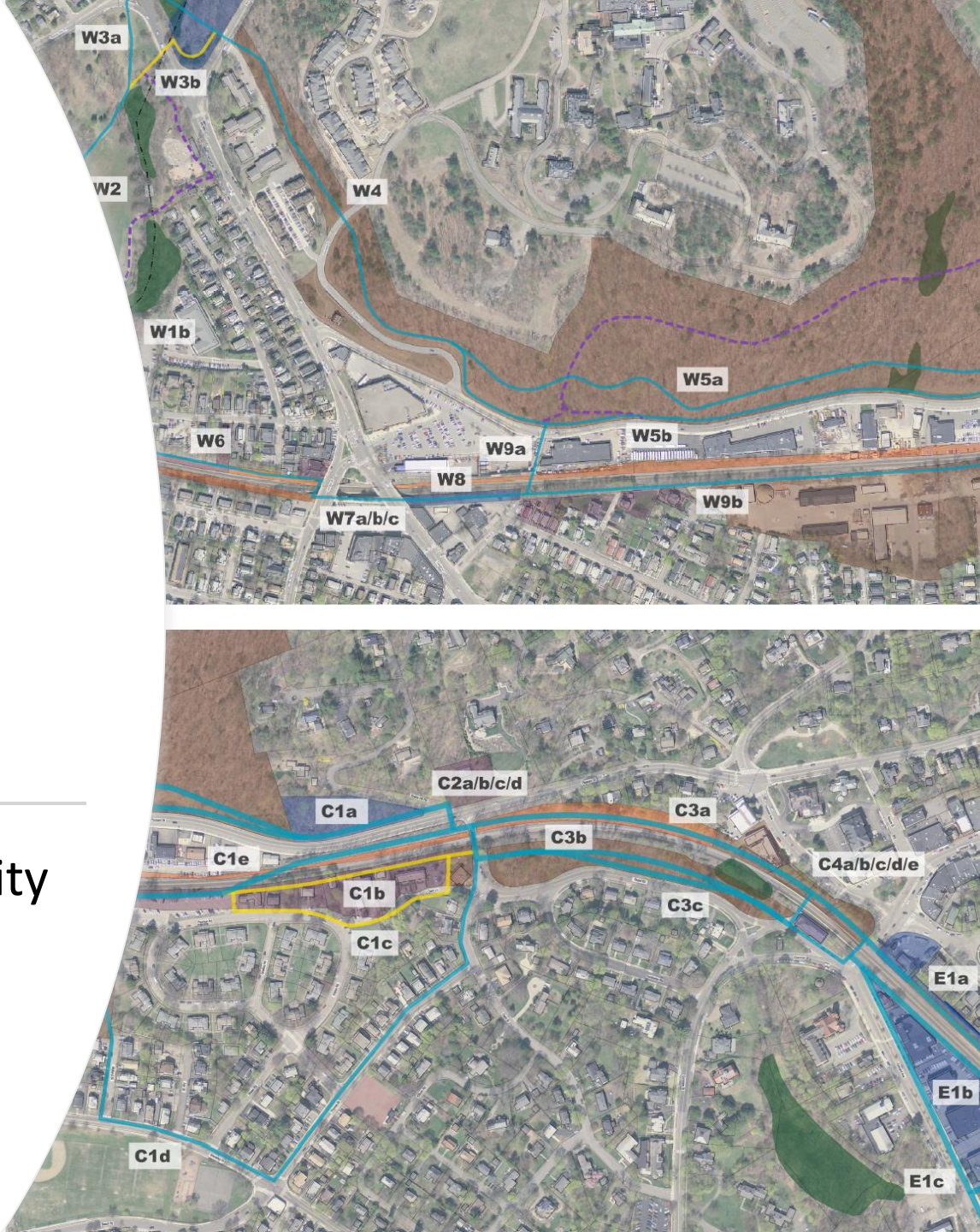


Belmont
Community
Path: Phase II
– 25% Design

Article 13: FY23 Community
Preservation Committee
Budget and Projects



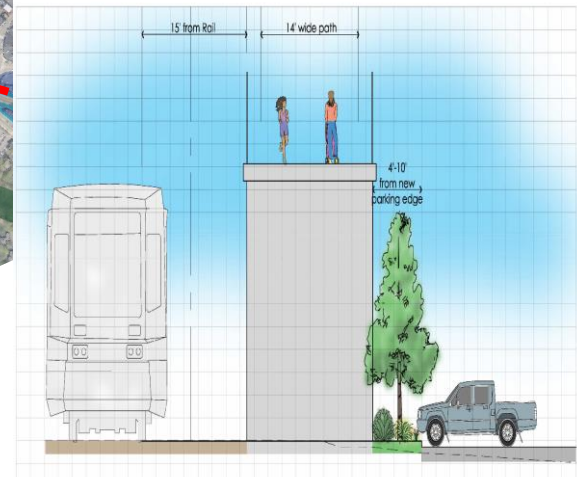
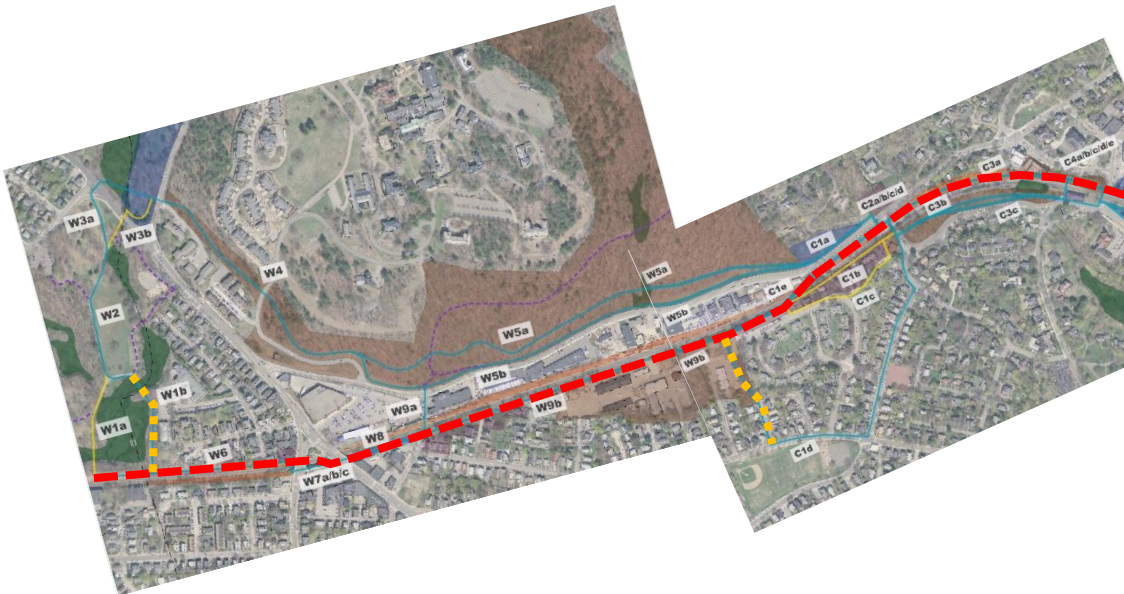
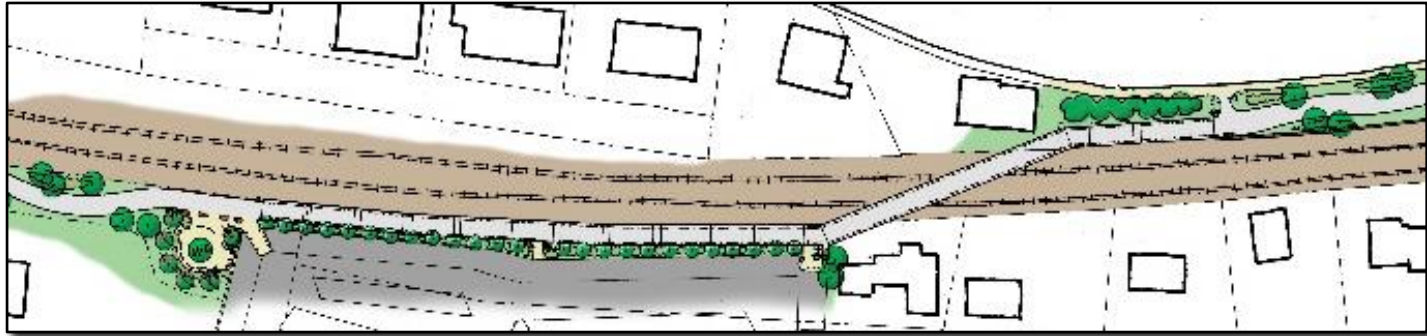
Context of CPC Request

- Nov. 2017: Pare Corporation completed feasibility study on Phase 1 and Phase 2 of the Community Path
- Aug. 2019: The Town contracted with Nitsch Engineering for design work on Phase 1
- Nov. 2021: 25% design set for Phase 1 submitted to MassDOT; formal MassDOT design public hearing expected later in 2022
- Dec. 2021: Select Board updated Community Path Project Committee charge to encompass Phase 2 design

Summary of CPC Request

- Project goals
 - Procure design consultant for Phase 2
 - Submit Project Need Form and Project Initiation Form to MassDOT
 - Complete and submit 25% design set
- \$200,000 request for CPA funding to be paired with \$250,000 state earmark for \$450,000 total budget
- Request submitted by the CPPC, with substantial assistance from Glenn Clancy and the Office of Community Development

Possible Alignment / Design Elements



**All diagrams and images from 2017 Feasibility Study prepared by Pare Corporation*

Possible Alignment / Design Elements



**All diagrams and images from 2017 Feasibility Study prepared by Pare Corporation*

Bottom Line

- Approval of this appropriation by Town Meeting will allow the Town and the CPPC to make progress on the crucial second phase of the project even as Phase 1 design continues from 25%-75%, and thereby help ensure the *full* Community Path is constructed as soon as possible
- Phase 2 is in many ways more complicated than Phase 1, and it is therefore crucial for the Town to begin this work now
- Any questions?