

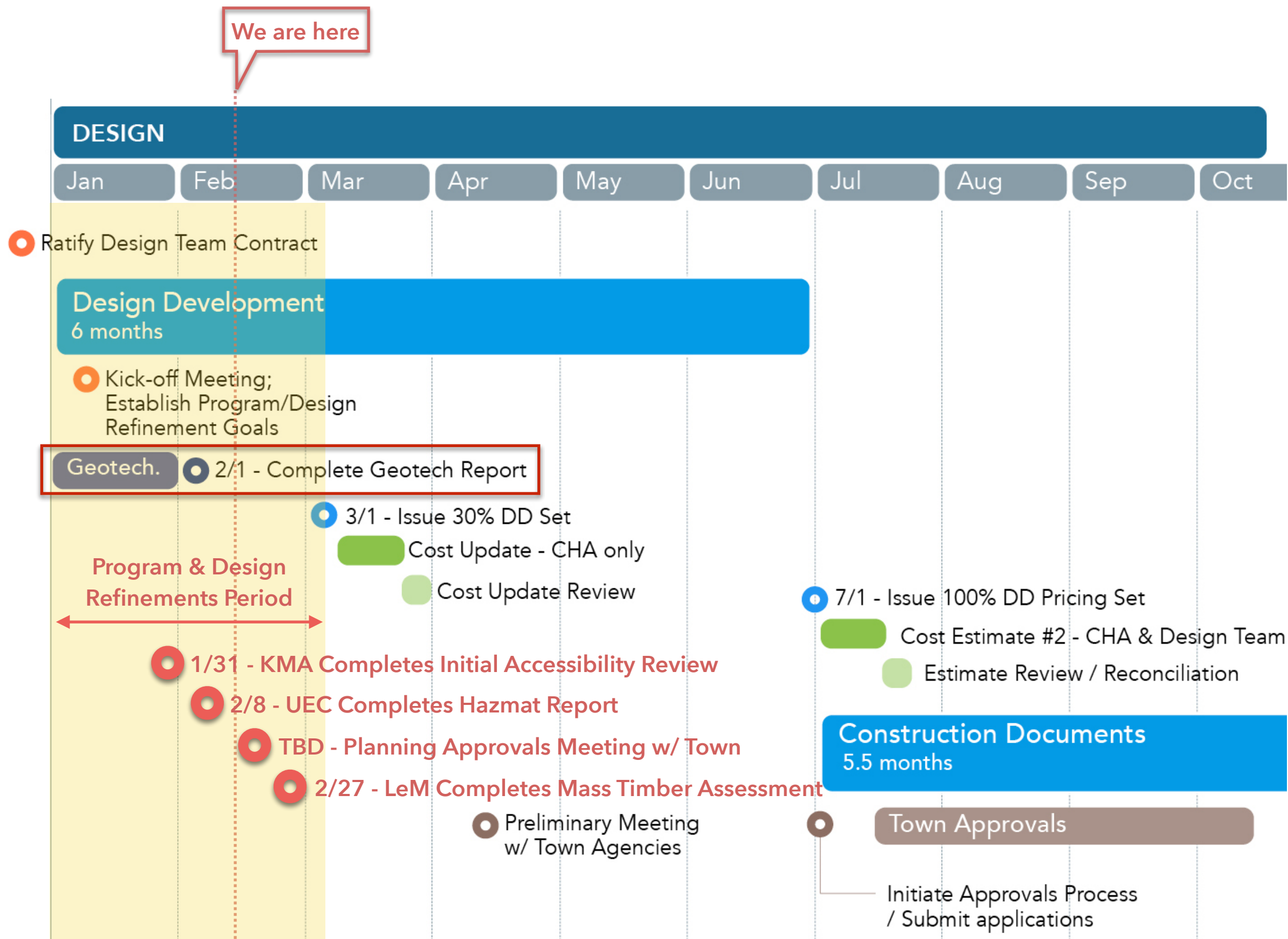
Belmont Public Library

Library Building Committee Meeting #4
February 14, 2023



Agenda

1. Welcome Public
2. Approve 1/31/2023 Meeting Minutes
3. Invoices
4. Update
 - a. Contracts
 - b. Hazmat Testing
 - c. EV Chargers
5. Design Update
 - a. Plan Refinements
 - b. Mass Timber Study
 - c. Construction Parking
6. Public Comment
7. Adjourn





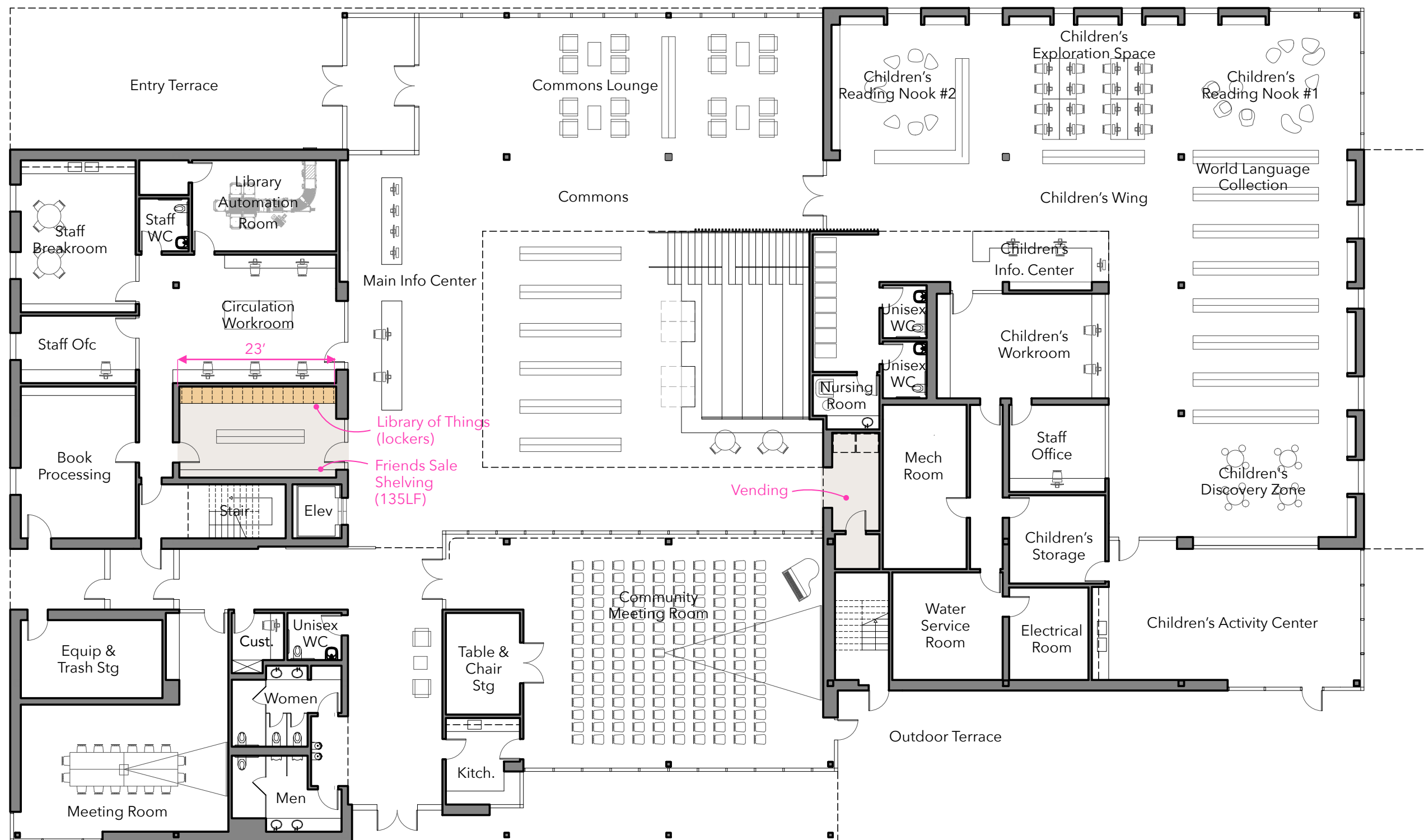
First Floor Plan January 31 Refinements



First Floor Plan Option 1



First Floor Plan Option 1: Library of Things



First Floor Plan Option 2



First Floor Plan Option 2: Library of Things



First Floor Plan Option 2 with Café



First Floor Plan Commons Stair



Revised seating rise/run

Intermediate Handrail with break
for seating access

(4) Wheelchair spaces with companion seats
moveable benches at wheelchair locations



Commons Stair Precedent: Austin Central Library



Commons Stair Precedent: Austin Central Library



Second Floor Plan January 31 Refinements

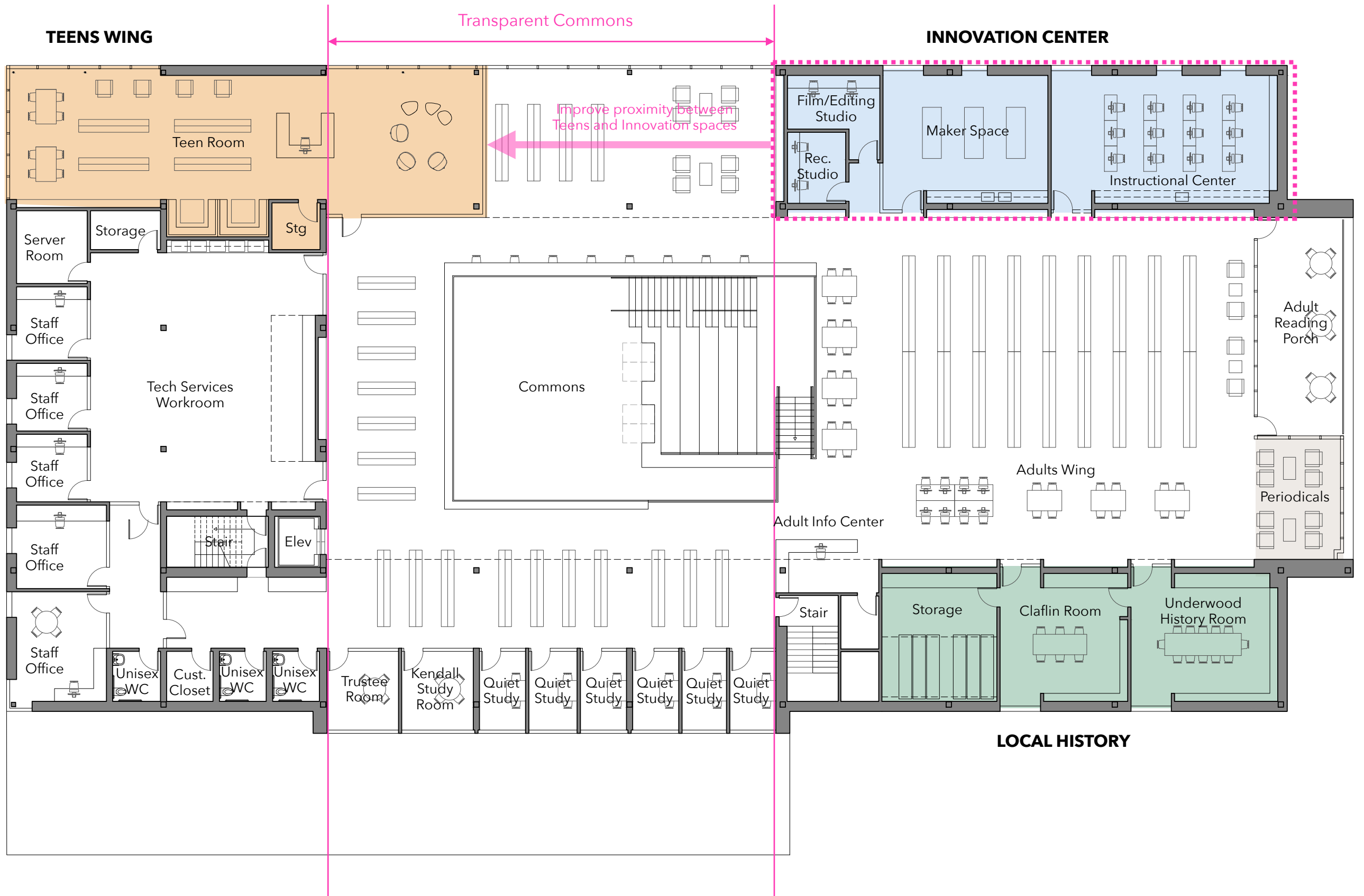
TEENS WING

INNOVATION CENTER



LOCAL HISTORY

Second Floor Plan



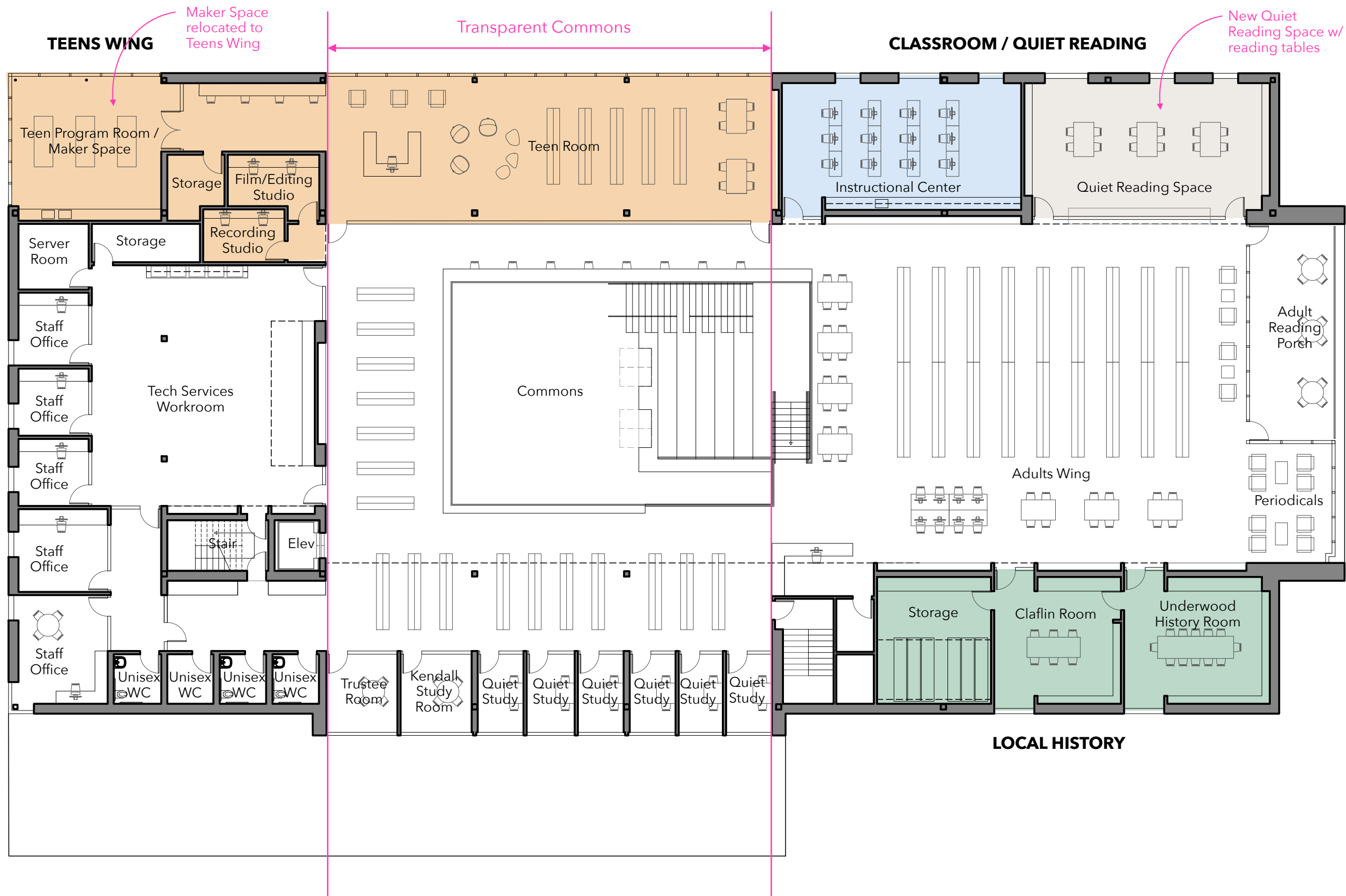
Second Floor Plan



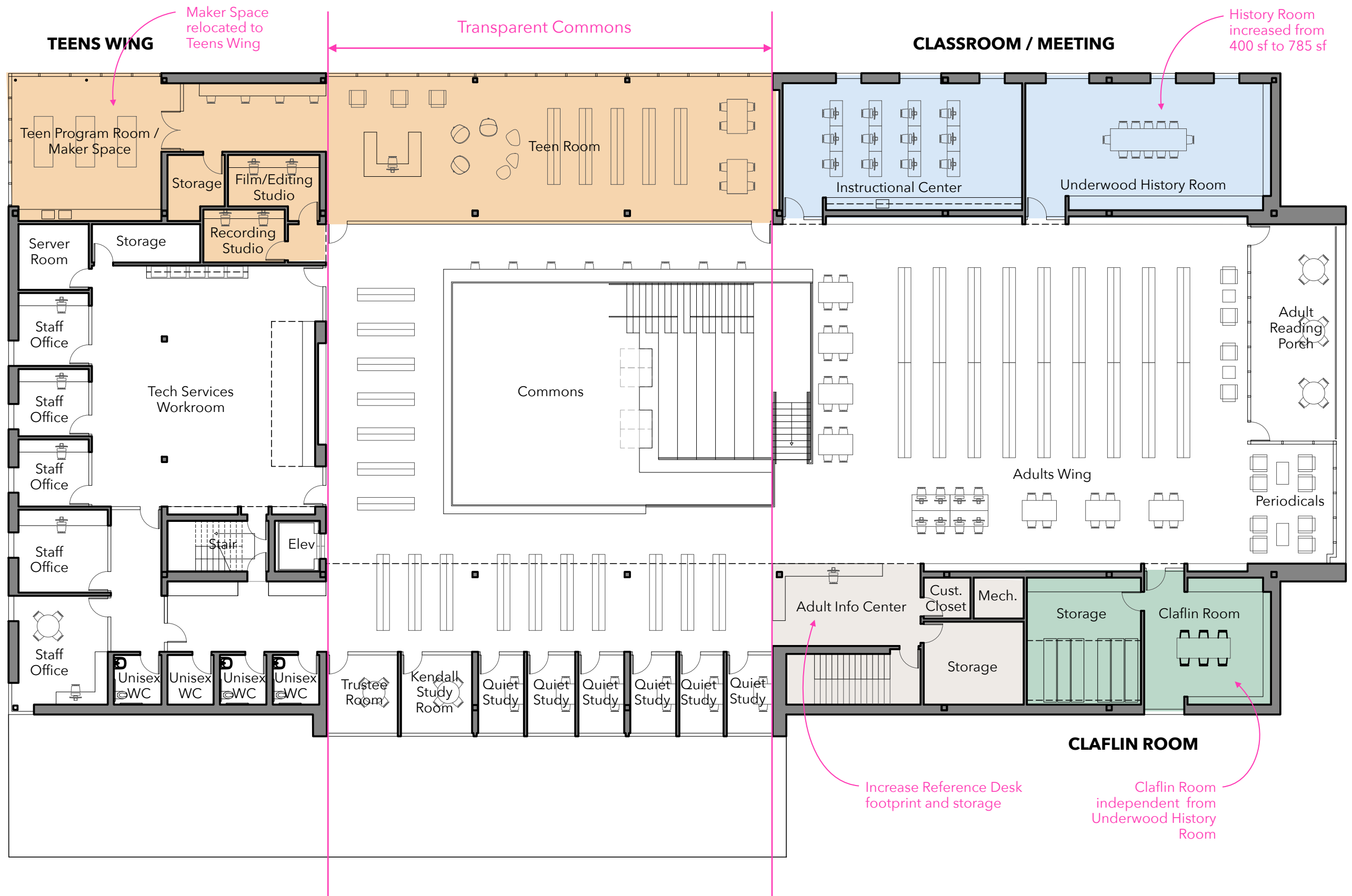
Second Floor Plan



Second Floor Plan



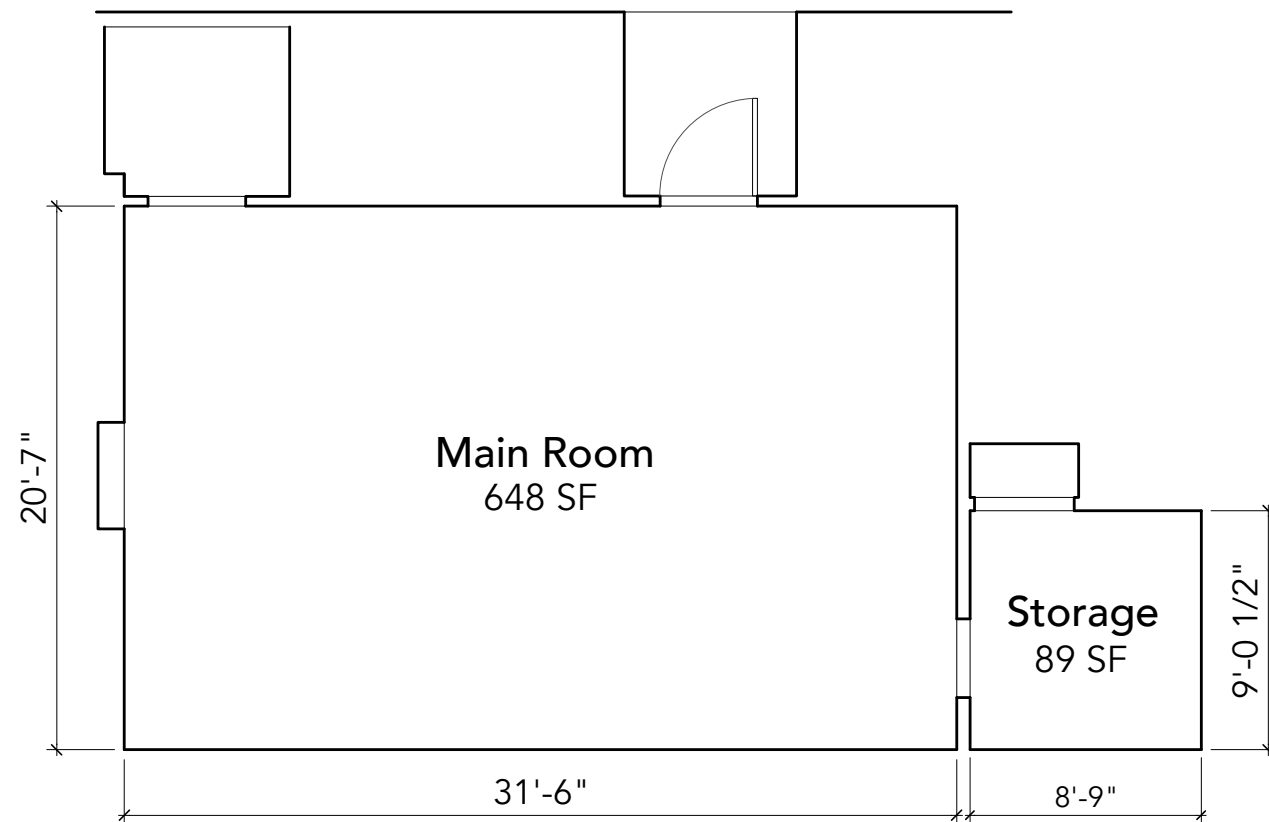
Second Floor Plan Option 1



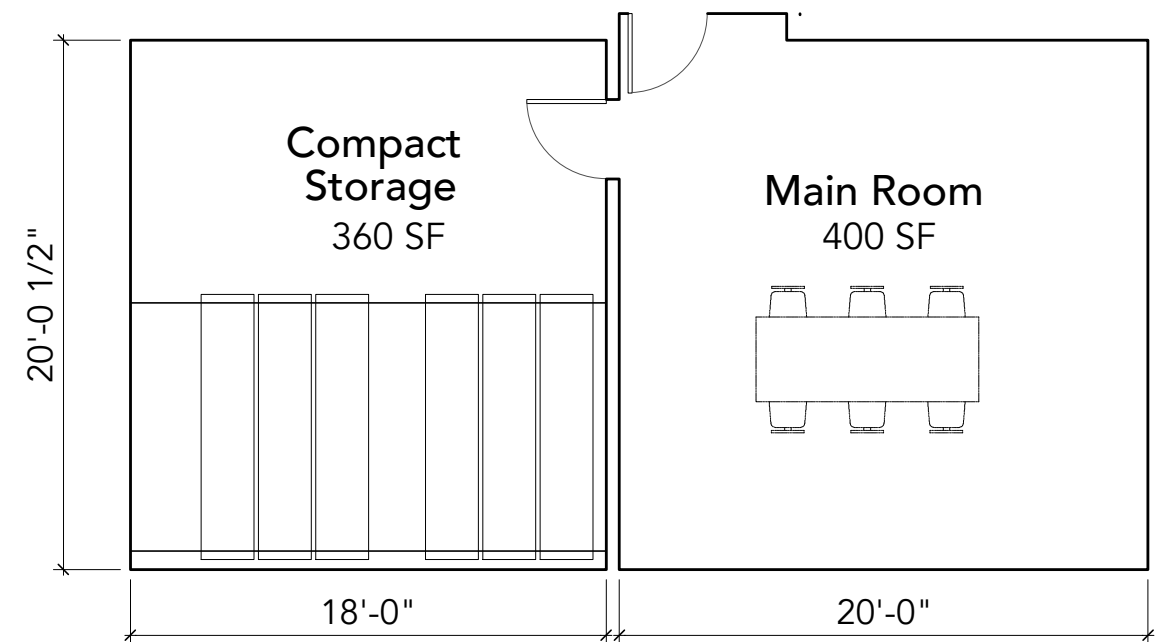
Second Floor Plan Option 2



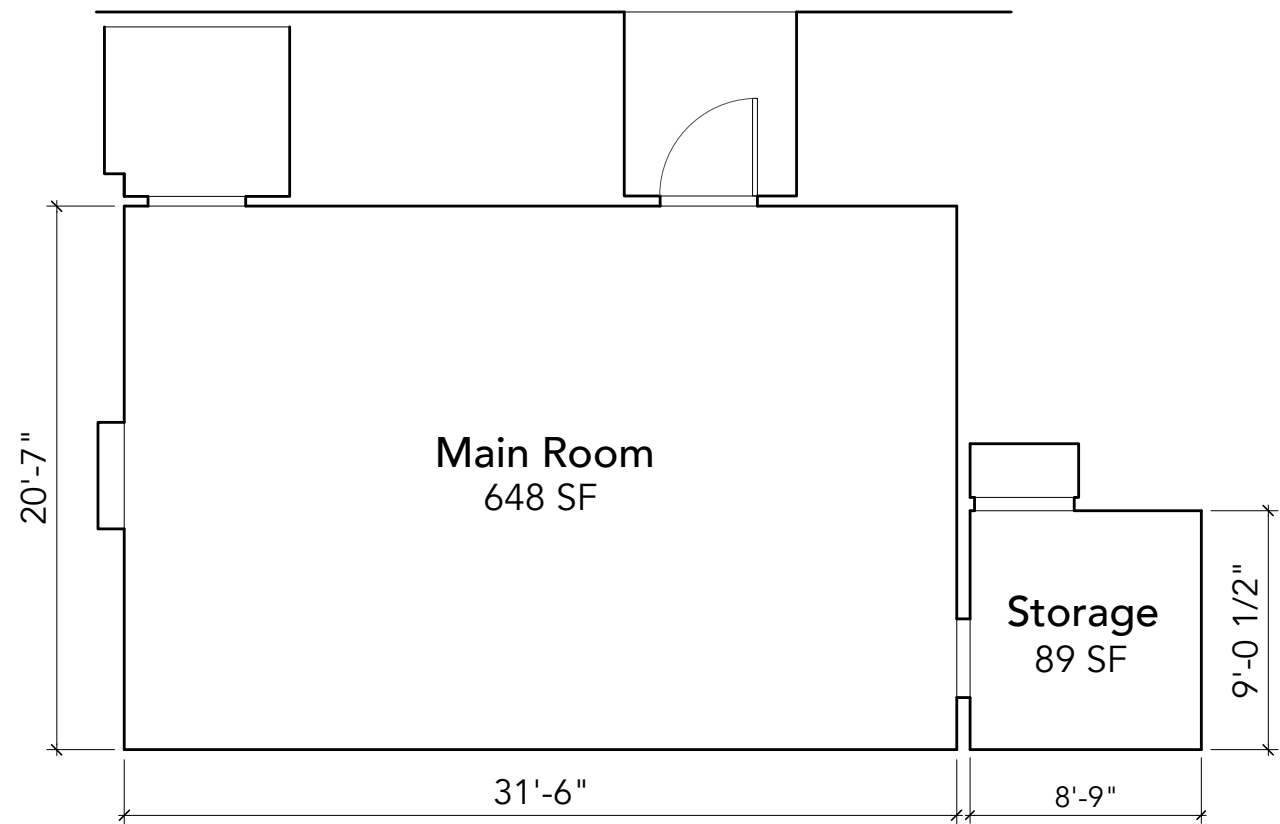
Second Floor Plan Claflin Room



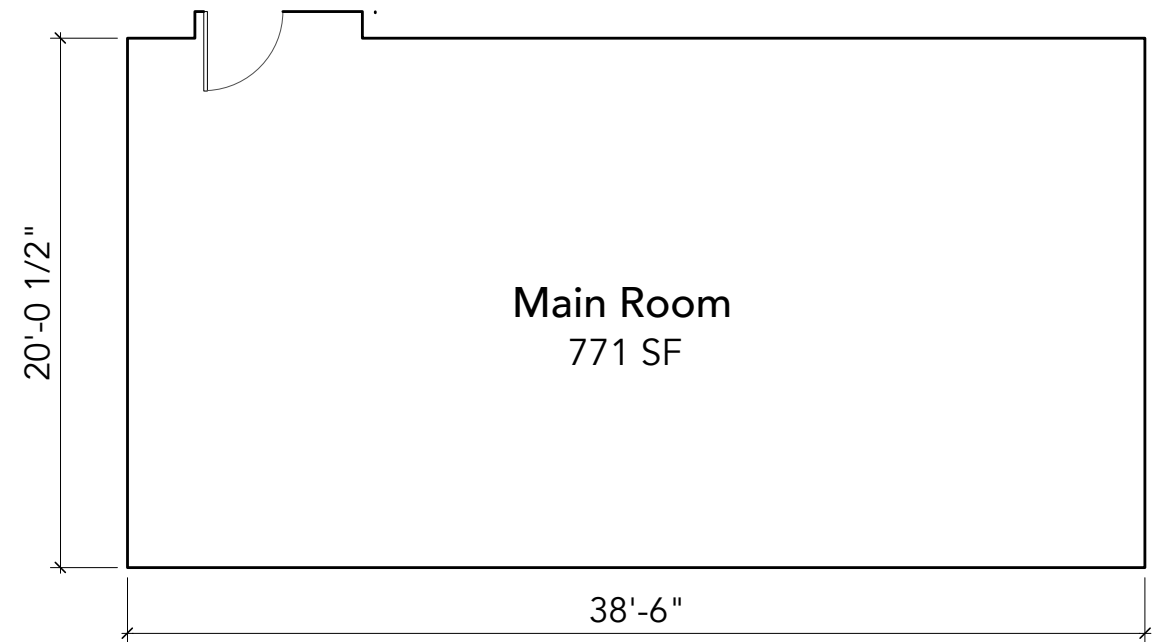
Existing Claflin Room (737 SF)



Space in New Building (760 SF)



Existing Claflin Room (737 SF)

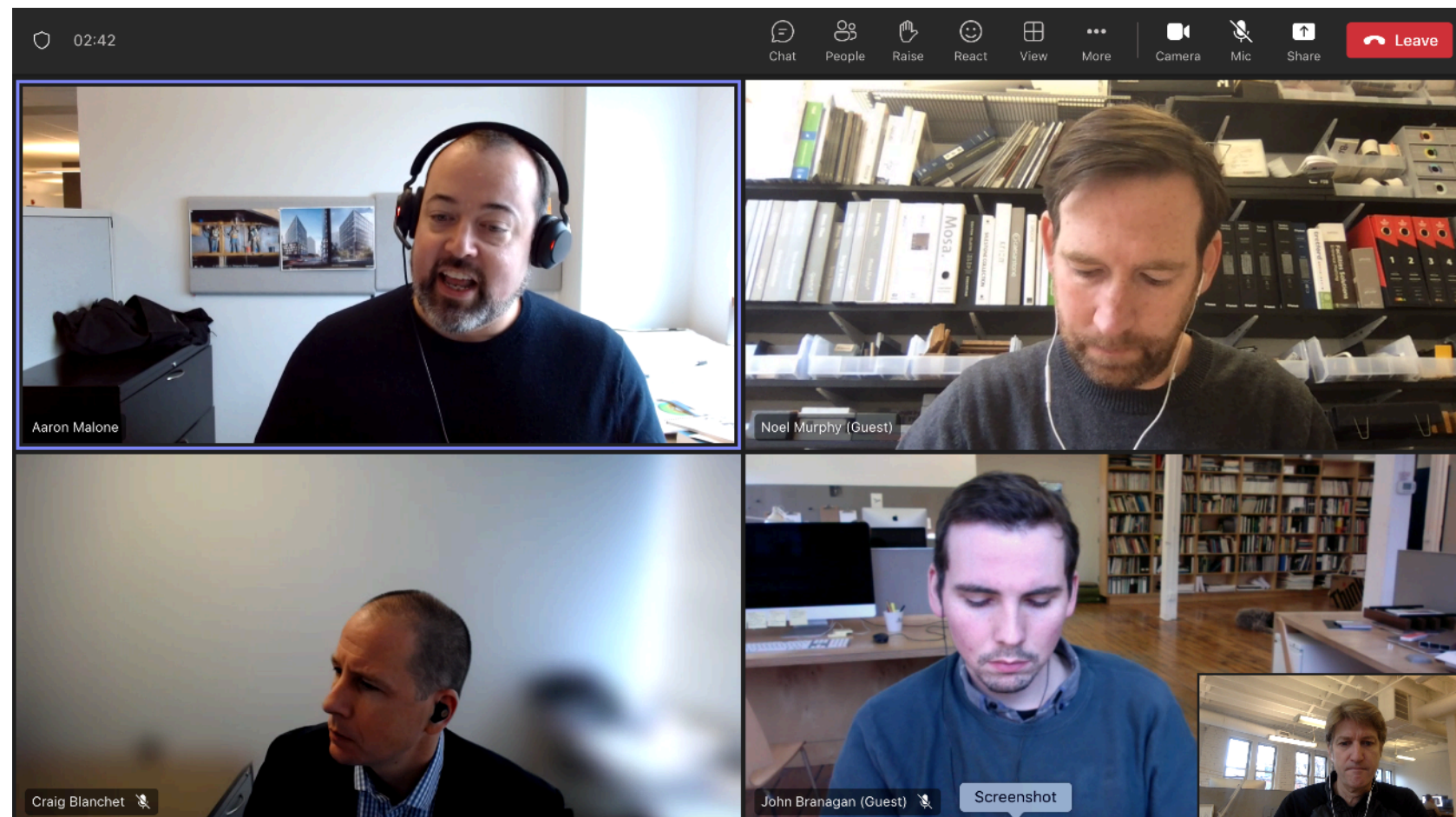


Space in New Building (771 SF)

Columns	Girders & Purlins	Decking	Embodied Energy	Cost
Steel	Steel	Metal deck w/conc. topping	Baseline	Baseline, In budget
Steel	Steel	CLT plank	?	?
Steel	Glulam	CLT plank	?	?
Glulam	Glulam	CLT plank	?	? 2X?

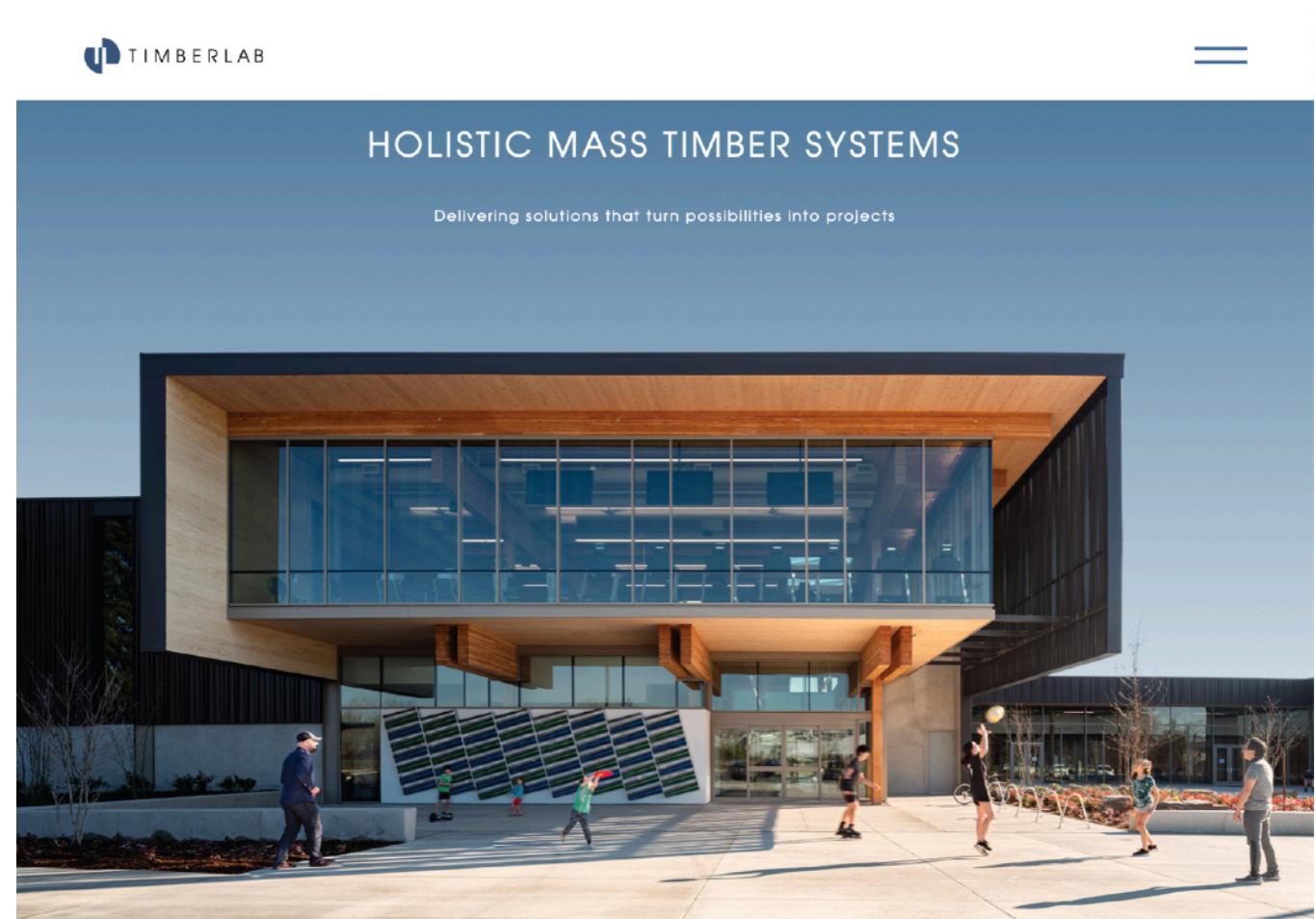


Columns	Girders & Purlins	Decking	Embodied Energy	Cost
Steel	Steel	Metal deck w/conc. topping	Baseline	Baseline, In budget
Steel	Steel	CLT plank	?	?
Steel	Gluelam	CLT plank	?	?
Gluelam	Gluelam	CLT plank	?	? 2X?



Mass Timber working meetings
with LeMessurier on 2/3 and 2/13

Columns	Girders & Purlins	Decking	Embodied Energy	Cost
Steel	Steel	Metal deck w/conc. topping	Baseline	Baseline, In budget
Steel	Steel	CLT plank	?	?
Steel	Gluelam	CLT plank	?	?
Gluelam	Gluelam	CLT plank	?	? 2X?



Timberlab

- Offices in Oregon and South Carolina
- Offers preconstruction services, including pricing and constructability review.

Columns	Girders & Purlins	Decking	Embodied Energy	Cost
Steel	Steel	Metal deck w/conc. topping	Baseline	Baseline, In budget
Steel	Steel	CLT plank	?	?
Steel	Glulam	CLT plank	?	?
Glulam	Glulam	CLT plank	60% reduction; ≈ 6 yrs of operational carbon	1-2% const. cost increase; ≈\$280-560K increase

Key Issues:

- Impacts of a 1-2% construction cost increase on the Belmont Public Library project budget
- Design Bid Build delivery model
- Cost estimator and contractor lack of familiarity with Mass Timber industry (East Coast issue)
- Optimization of Mass Timber approach requires more careful analysis of structural bay spacing
- Unique detailing required at brick wall facing connection to Mass Timber superstructure



Construction Parking



The First Church in Belmont
(26 stalls)

First Armenian Church
(≈10 stalls)

Concord Avenue Street Parking
(≈15-20 spaces)

Library Work Site

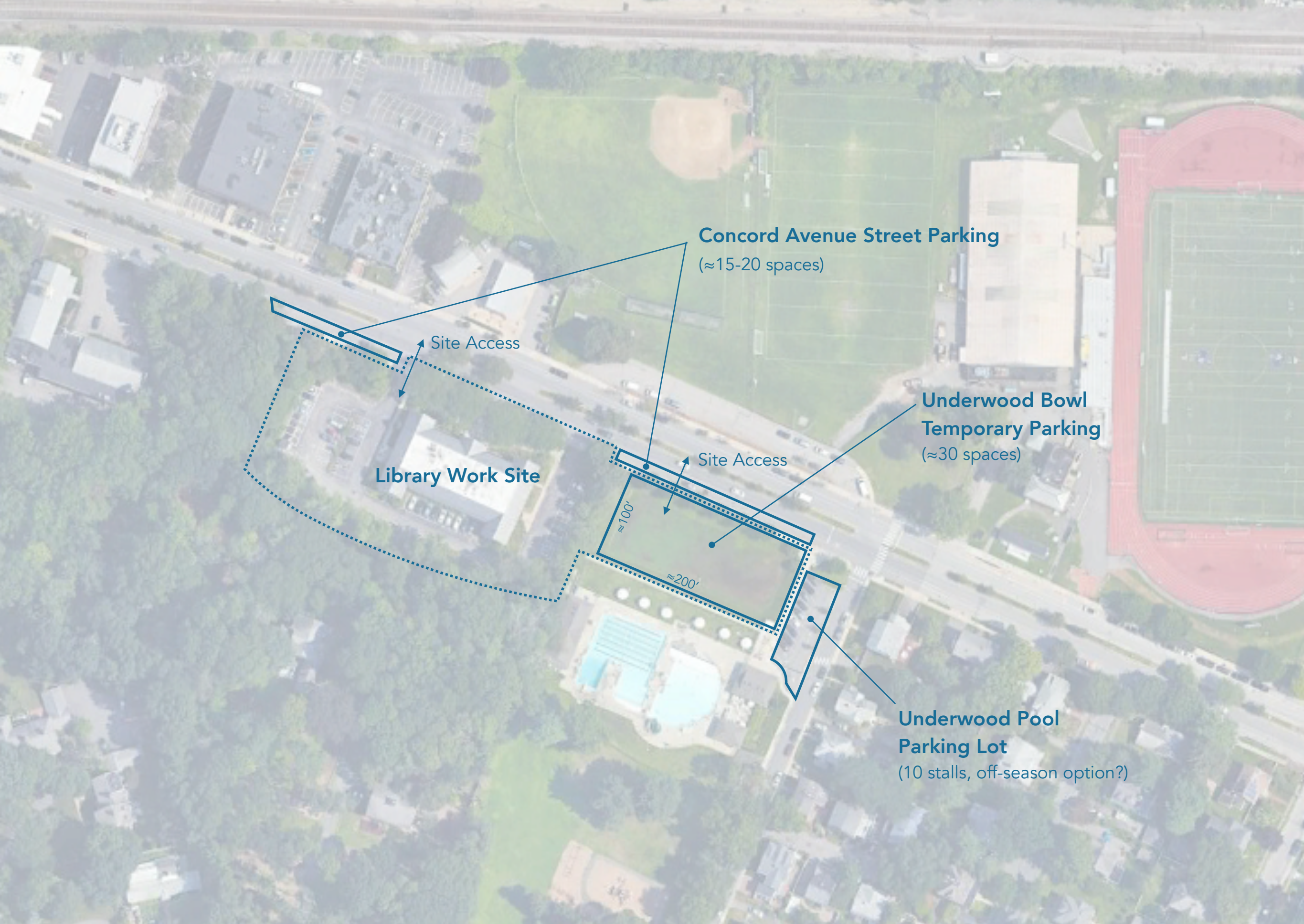
**Underwood Pool
Parking Lot**
(10 stalls, off-season option?)

Wellington Elementary School
(≈55 stalls, summer option?)

St. Joseph's Parish
(36 stalls)

Global Montessori School
(≈76 stalls, summer option?)

Construction Parking 233 parking stalls within a 5-min walk of work site



Concord Avenue Street Parking
(≈15-20 spaces)

Site Access

Library Work Site

Site Access

**Underwood Bowl
Temporary Parking**
(≈30 spaces)

≈100'
≈200'

**Underwood Pool
Parking Lot**
(10 stalls, off-season option?)

Construction Parking 50-60 potential parking spaces on or adjacent to site



Oudens Ello Architecture