

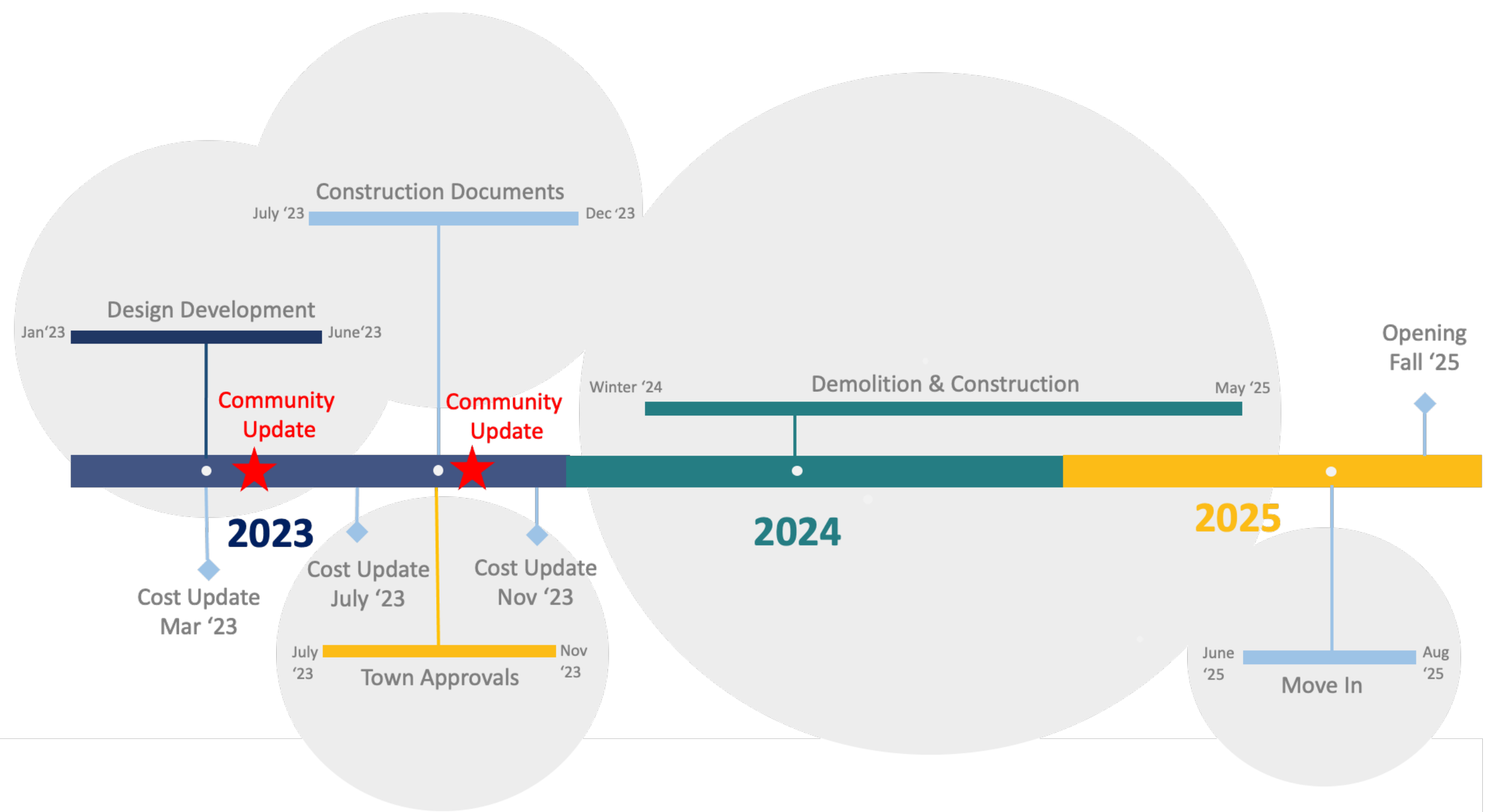
Belmont Public Library

Community Presentation

April 25, 2023



Library Building Project – Schedule



Library Building Project – Budget

\$ 39.5M

Total Project Cost

Less \$5.0M

Private Fundraising

-
- **Cost estimates will be reassessed multiple times in 2023 - April, July, and November**
 - **Current project costs are within forecasted budget**
 - **Funds from fundraising efforts currently available to the town \$1 million with an additional \$1.1 million available in May**

2019 Schematic Design Process

- January - December 2019 (12 months)
- Bi-weekly meetings with Library Building Committee
- Library staff meetings
- Focus group meetings (Veterans, Historical Society, Council on Aging, etc.)
- Meetings with town agencies
- Net Zero Energy feasibility study
- Three community meetings (March, May, November 2019)
- Online survey

2023 Design Development Process

- January - April 2023 (4 months to date)
- Design updates per 2019-2022 community feedback and Covid lessons learned
- Construction cost estimate update
- Bi-weekly meetings with Library Building Committee
- Additional focus group meetings
- Additional meetings with town agencies

What We Heard

- Strong interest in accommodating small meeting / quiet study spaces
- Overwhelming support for Children's wing on the ground floor
- Excitement about having the main entrance level with Concord Avenue
- Wood and brick materials as tie-ins to existing building fabric of Belmont
- Enthusiasm for making Wellington Brook a part of the Library landscape
- Interest in a user experience that takes advantage of views and access to outdoors
- Strong interest in net zero energy outcome

Opportunities for Improvement

- Commons stair
- Quiet areas and study carrels in the Adults wing
- Outdoor reading porch size and seasonal limitations
- Additional mechanical and storage space

Engage the Underwood Property

Create a Welcoming Civic Presence

Cultivate a Garden Edge Along Wellington Brook

Connect to the Wildflower Garden

Underwood Pool

Concord Ave

Public Open Space

Library

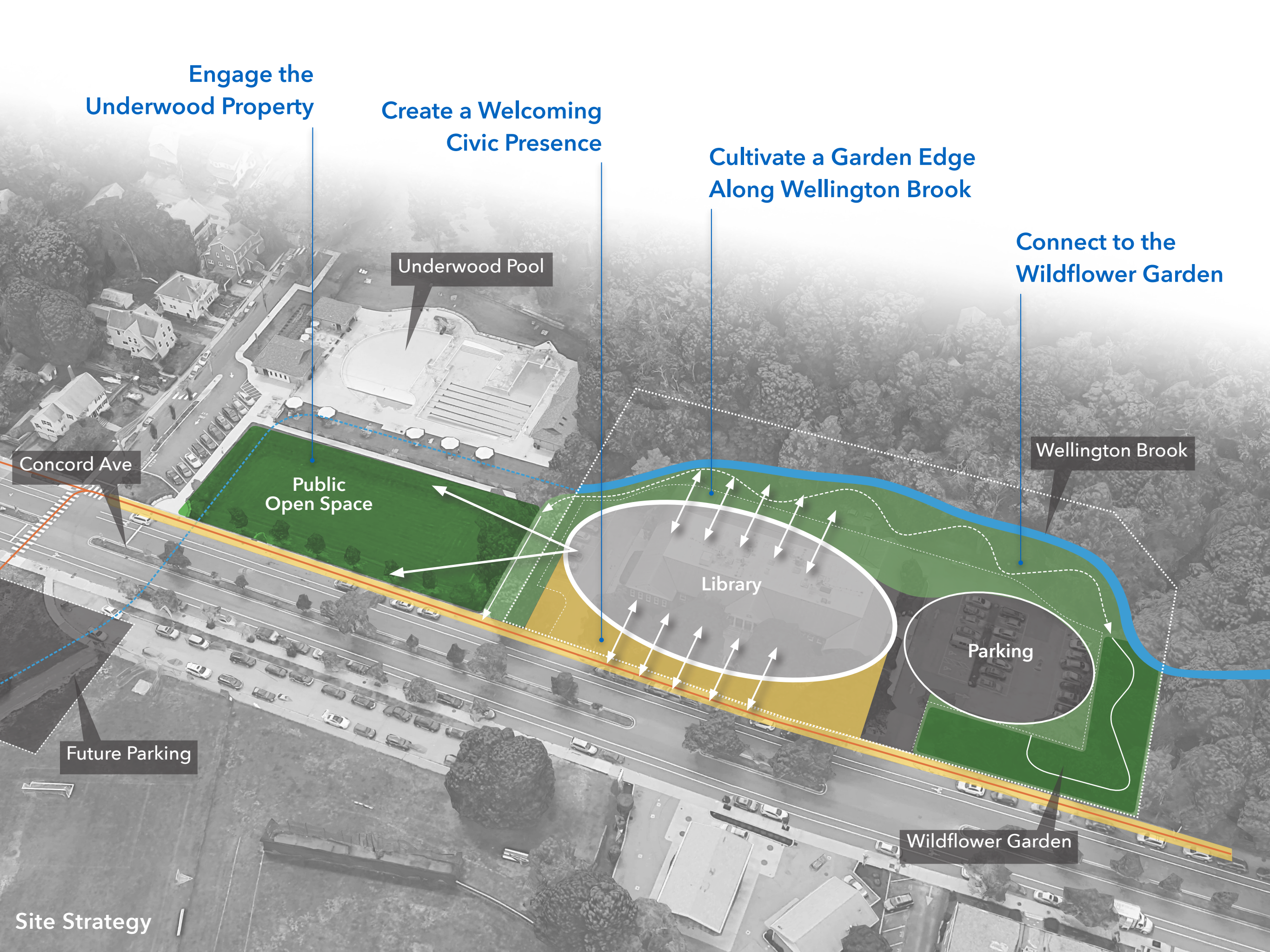
Wellington Brook

Parking

Future Parking

Wildflower Garden

Site Strategy





Site Plan

Underwood
Lawn

Wellington
Brook

Concord
Avenue

Parking
(42 Spaces)

Ground Floor Plan



Underwood
Lawn

Wellington
Brook

Concord
Avenue

ENTRY

Book
Drop

Veterans
Memorial

Parking
(42 Spaces)

Ground Floor Plan

Underwood
Lawn

Wellington
Brook

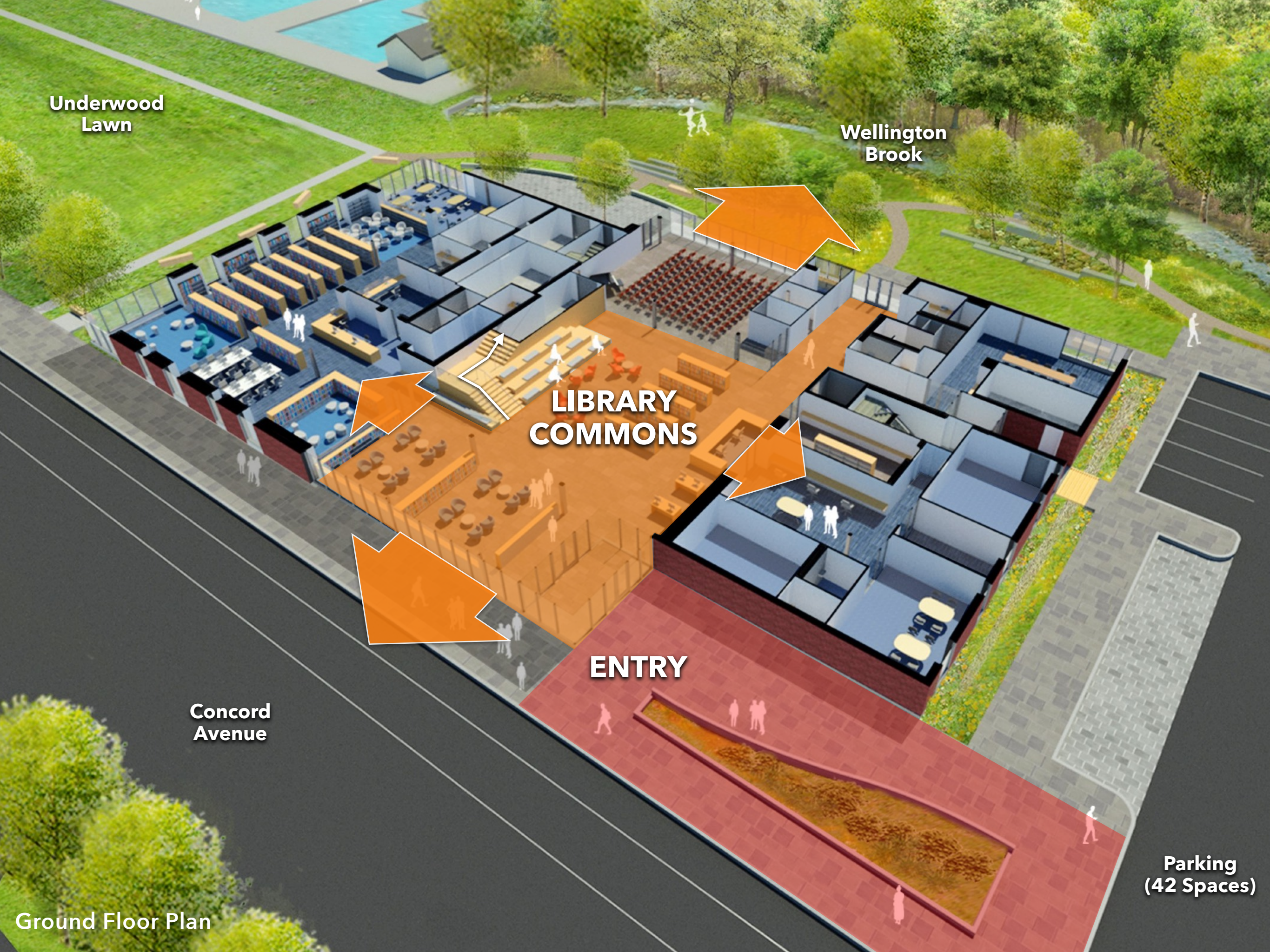
LIBRARY
COMMONS

ENTRY

Concord
Avenue

Parking
(42 Spaces)

Ground Floor Plan





Community Meeting Room

Vending

Mens

Womens

WC

Storage

Commons Stair

Flexible Seating

New Materials

Info Desk

Self Check-Out

Circulation Workroom

Commons Lounge

LIBRARY COMMONS

Entrance

Children's Wing

Ground Floor Plan



Library Commons

Underwood
Lawn

Children's
Activity Room

Wellington
Brook

Children's Wing

CHILDREN'S

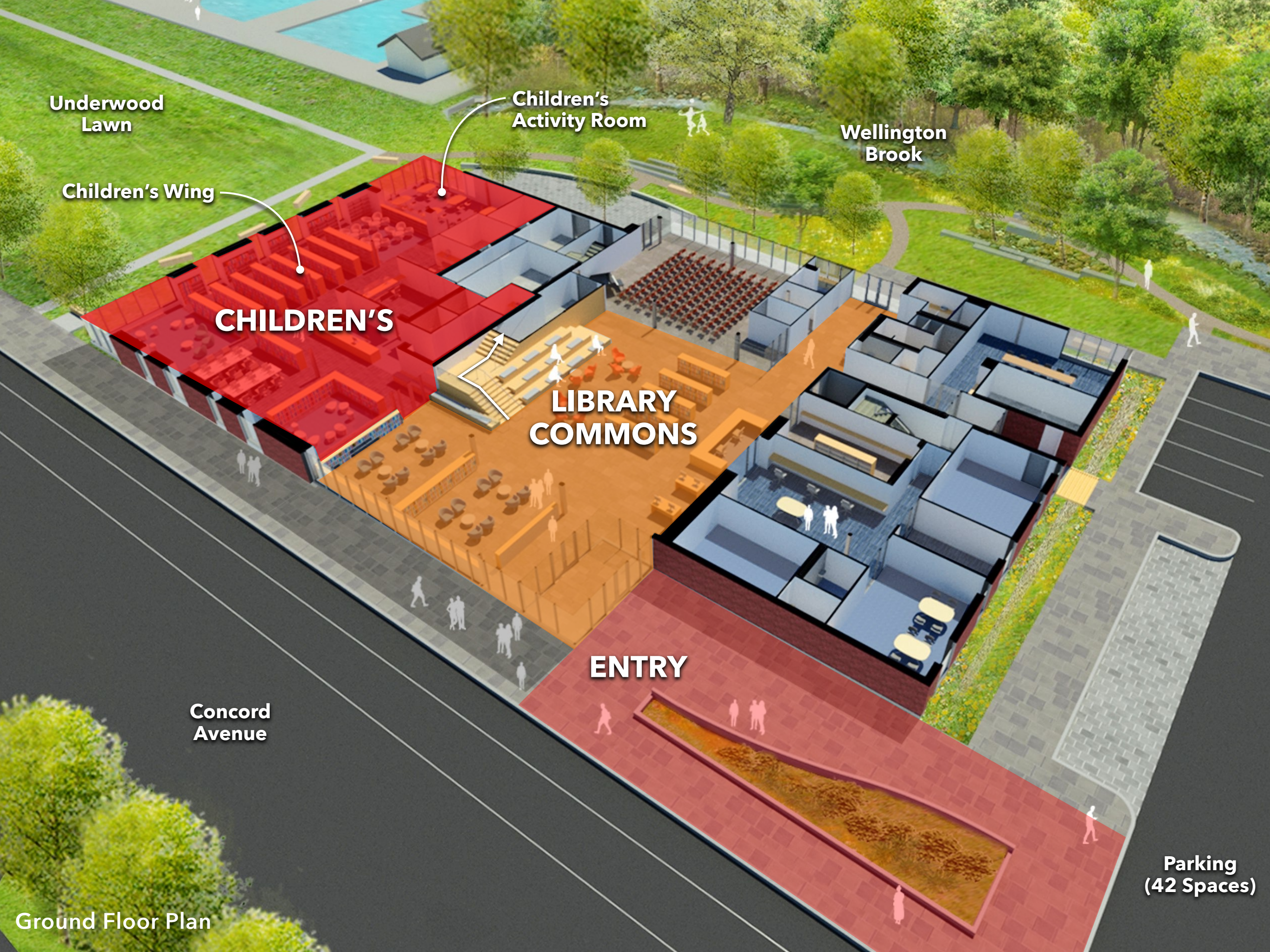
**LIBRARY
COMMONS**

ENTRY

Concord
Avenue

Parking
(42 Spaces)

Ground Floor Plan





Children's Wing

Underwood
Lawn

CHILDREN'S

Community
Meeting Room

Meeting
Room

MEETING

LIBRARY
COMMONS

ENTRY

Concord
Avenue

Parking
(42 Spaces)

Ground Floor Plan

Underwood
Lawn

CHILDREN'S

LIBRARY
COMMONS

AFTER HOURS
ACCESS

Community
Meeting Room

Meeting
Room

After Hours
Entrance

ENTRY

Concord
Avenue

Parking
(42 Spaces)

Ground Floor Plan



Community Room

Underwood
Lawn

CHILDREN'S

MEETING

LIBRARY
COMMONS

STAFF &
SUPPORT

Community
Meeting Room

Meeting
Room

Staff and
Deliveries
Entrance

ENTRY

Book Return,
Circulation Staff

Concord
Avenue

Parking
(42 Spaces)

Ground Floor Plan



Library Commons

Concord Avenue

Second Floor Plan



Periodicals

Outdoor
Reading Porch

Reference Desk

ADULT

Library
Commons

Concord
Avenue

Second Floor Plan



Second Floor Overlooking Library Commons



Periodicals and Outdoor Reading Porch



**QUIET
READING**

ADULT

**Library
Commons**

**Concord
Avenue**

Second Floor Plan



**QUIET
READING**

**STUDY
ROOMS**

ADULT

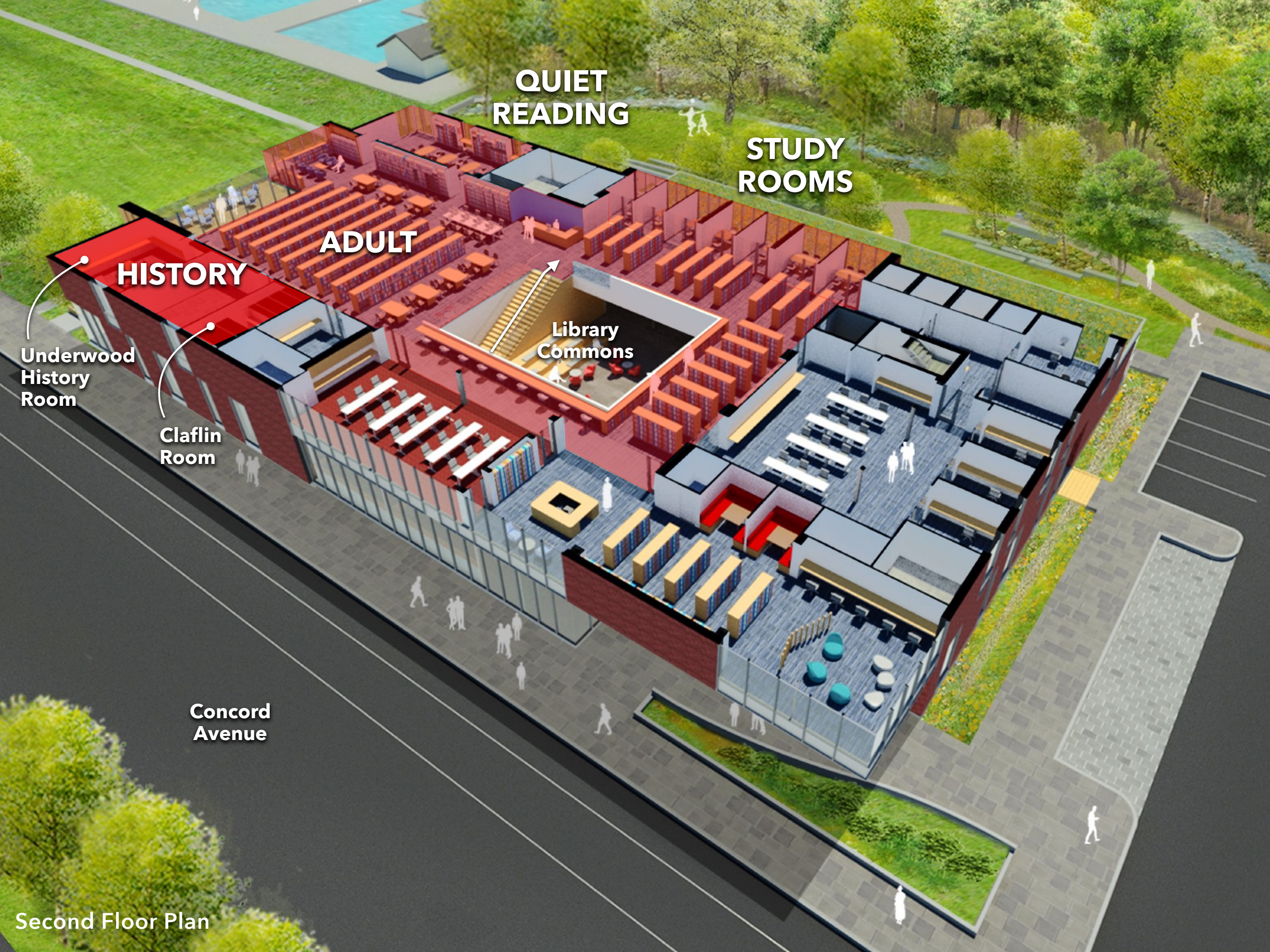
**Library
Commons**

**Concord
Avenue**

Second Floor Plan



Study Rooms



**QUIET
READING**

**STUDY
ROOMS**

ADULT

HISTORY

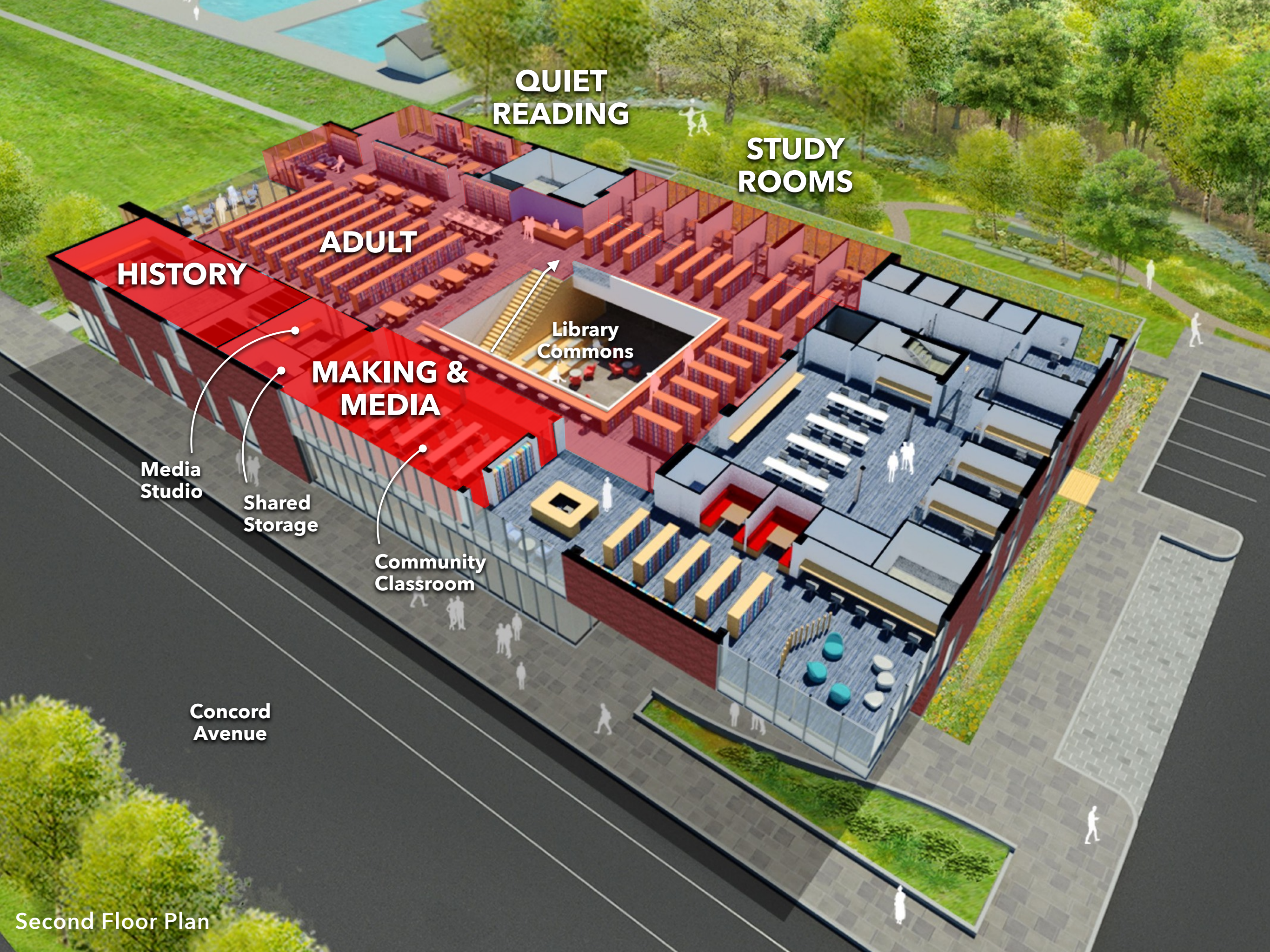
**Library
Commons**

**Underwood
History
Room**

**Claflin
Room**

**Concord
Avenue**

Second Floor Plan



**QUIET
READING**

**STUDY
ROOMS**

HISTORY

ADULT

**MAKING &
MEDIA**

Library
Commons

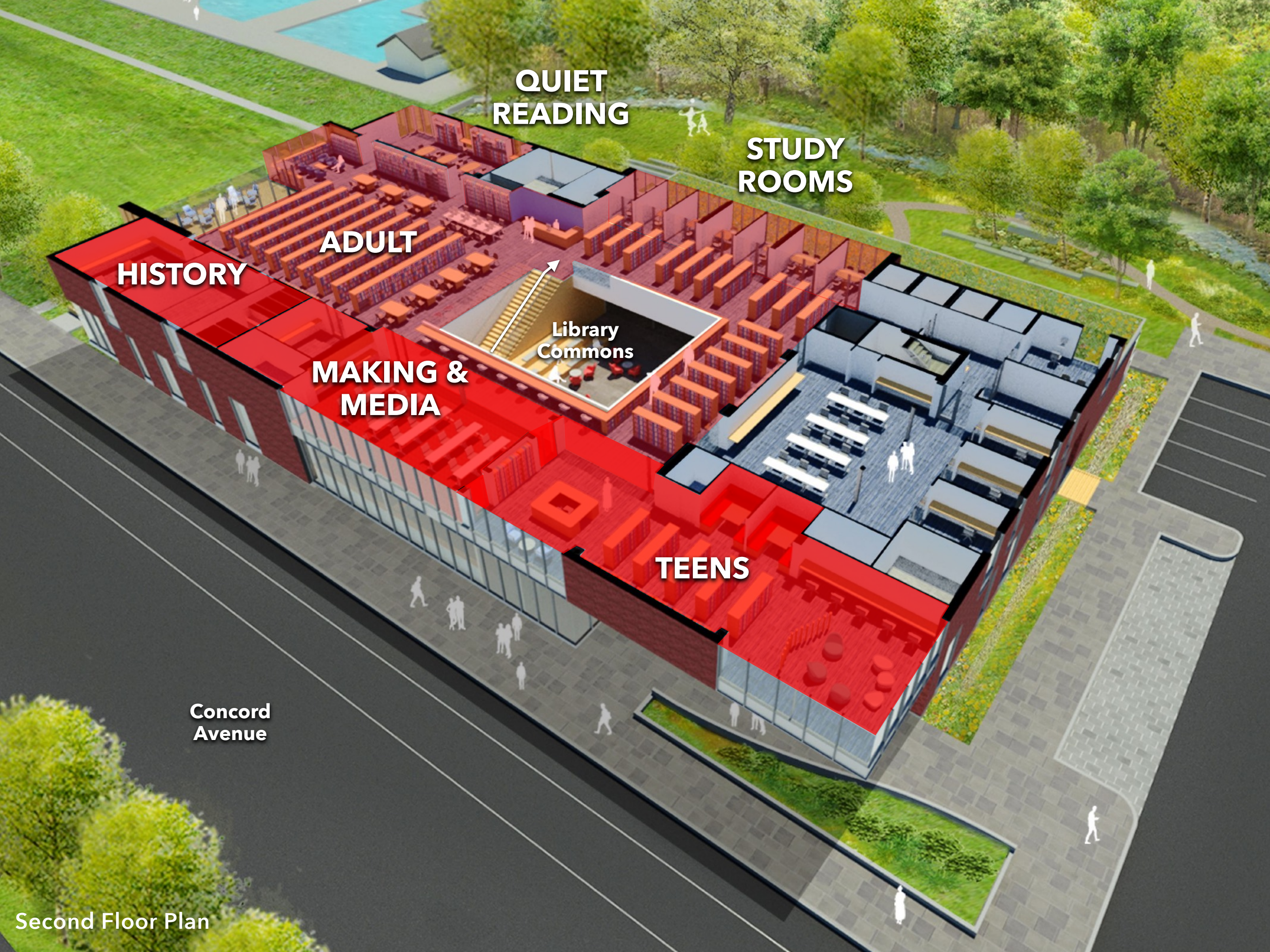
Media
Studio

Shared
Storage

Community
Classroom

Concord
Avenue

Second Floor Plan



**QUIET
READING**

**STUDY
ROOMS**

HISTORY

ADULT

**MAKING &
MEDIA**

Library
Commons

TEENS

**Concord
Avenue**

Second Floor Plan



Teens Wing



**QUIET
READING**

**STUDY
ROOMS**

**HISTORY
ADULT**

**MAKING &
MEDIA**

Library
Commons

**STAFF &
SUPPORT**

TEENS

Staff Workroom
& Offices

Concord
Avenue

Second Floor Plan



MECHANICAL

**Concord
Avenue**

Penthouse Plan



PV ARRAY

**Concord
Avenue**

Roof Plan



Aerial View Looking Southeast



View Across Concord Avenue



Belmont Town Hall
Henry W. Hartwell, 1881



Homer Municipal Building
Ebenezer Homer, 1899



Underwood Memorial Library
William Ralph Emerson, 1902

Materiality Language of Belmont Municipal Buildings



View Across Underwood Lawn



View Across Underwood Lawn

ENERGY EFFICIENT BUILDING SYSTEMS

An all-electric VRF mechanical system contributes to a Zero Net Energy-ready building by eliminating fossil fuel use and reducing energy consumption through its high efficiency operation



NATURAL DAYLIGHTING

Natural light is invited deep into the library interior to illuminate reading spaces and reduce electric lighting loads



SOUTH FACING SOLAR PANELS

Roof-mounted photovoltaic (PV) panels contribute directly to the library's energy needs and reduce the building's overall ecological footprint



NATIVE PLANT SPECIES

Native species are restored along the banks of Wellington Brook to maintain the longevity of the brook landscape and provide an inviting teaching tool

HIGH PERFORMANCE BUILDING ENVELOPE

The library's walls, roof and windows are highly insulated to limit energy transfer and maximize the efficiency of heating and cooling systems



HEALTHY MATERIALS

Interior finishes and furniture use sustainable materials to ensure the long term health and wellbeing of the library occupants and library collection

STORMWATER MANAGEMENT

Vegetated swales and rain gardens capture and filter rainwater while runoff is reduced using permeable paving in place of conventional asphalt

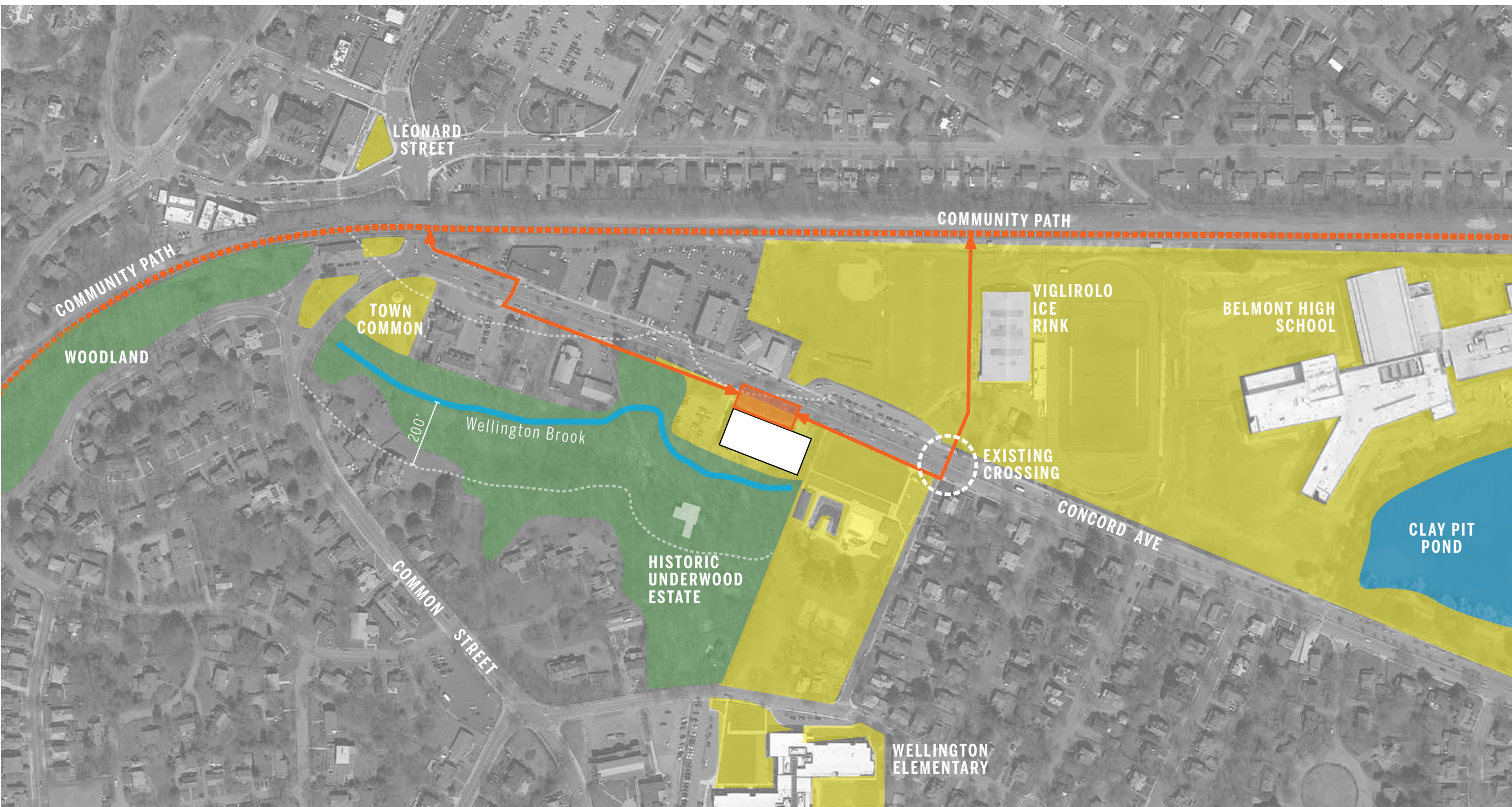


ACTIVE LANDSCAPE

Outdoor walking paths and intimate reading spaces create an active landscape along Wellington Brook linking the library, Woodland Garden and Underwood Pool & Playground



Wellington Brook



DESIGN: Proposed Site Connections

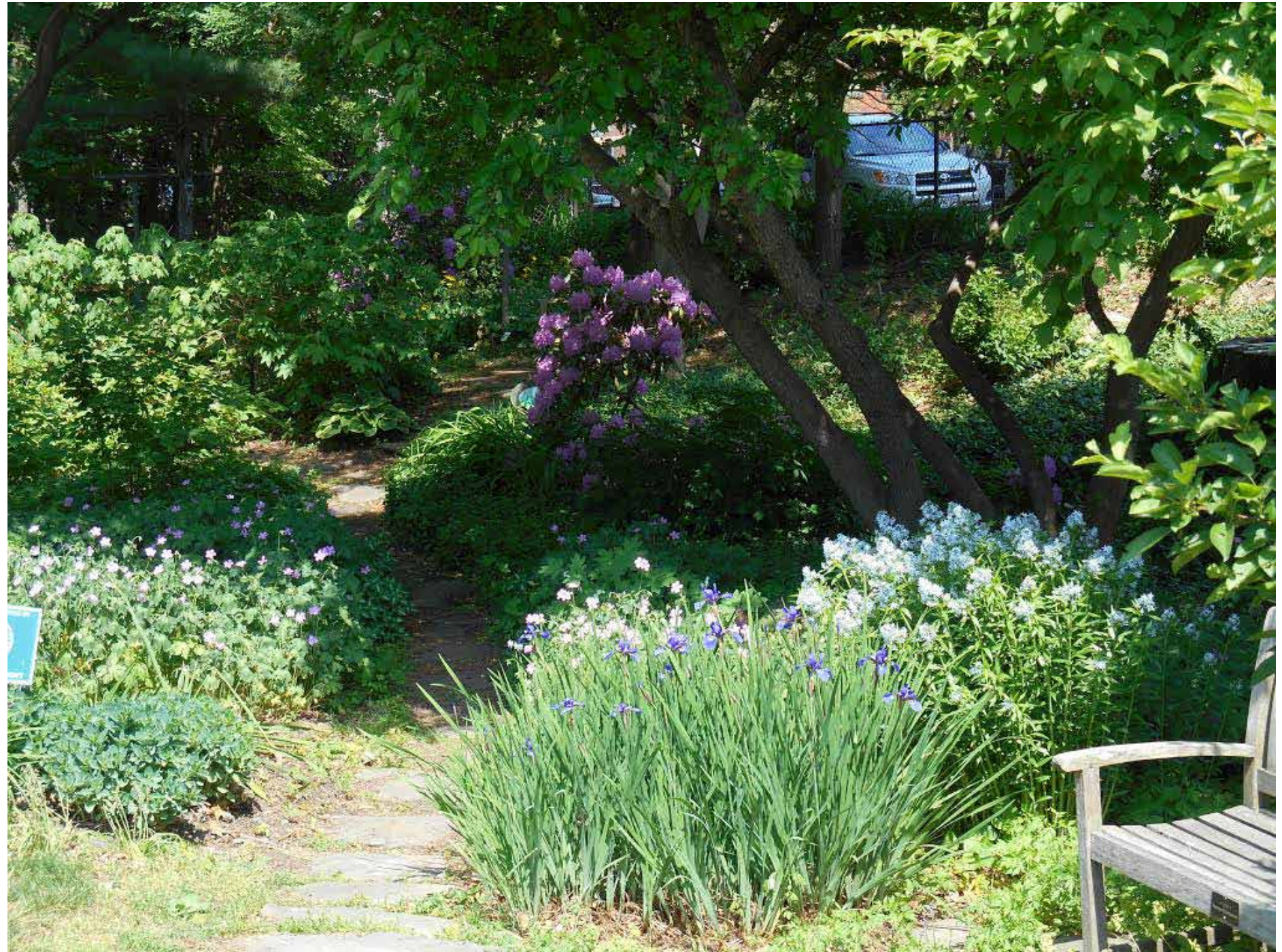
BELMONT LIBRARY Belmont, MA
Schematic Design Remobilization • 04 25 2023



DESIGN: Bringing the Landscape Inside

BELMONT LIBRARY Belmont, MA
Schematic Design Remobilization • 04 25 2023

STIMSON



WOODLAND GARDEN: Existing Garden

BELMONT LIBRARY Belmont, MA
Schematic Design Remobilization • 04 25 2023

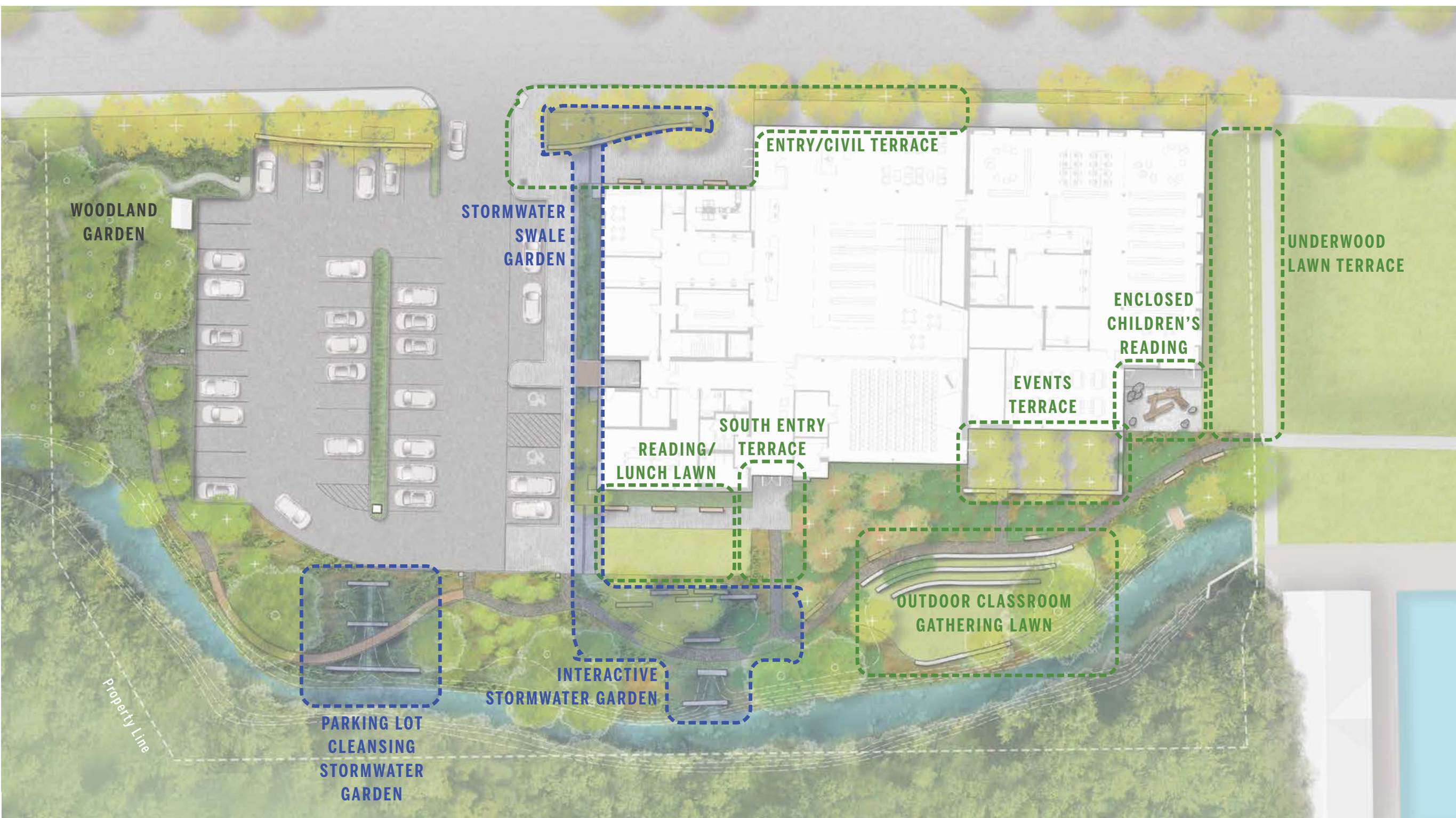
STIMSON



WELLINGTON BROOK CORRIDOR: Existing Conditions

BELMONT LIBRARY Belmont, MA
Schematic Design Remobilization • 04 25 2023

STIMSON



SITE PROGRAM

BELMONT LIBRARY Belmont, MA
Schematic Design Remobilization • 04 25 2023

STIMSON



SCHEMATIC DESIGN SITE PLAN

BELMONT LIBRARY Belmont, MA
Schematic Design Remobilization • 04 25 2023

STIMSON



SCHEMATIC DESIGN VIEW

BELMONT LIBRARY Belmont, MA
Schematic Design Remobilization • 04 25 2023



SCHEMATIC DESIGN VIEW

BELMONT LIBRARY Belmont, MA
Schematic Design Remobilization • 04 25 2023

STIMSON



DRAFT REVISED SITE PLAN

BELMONT LIBRARY Belmont, MA
Schematic Design Remobilization • 04 25 2023

STIMSON

Get Involved | Learn More

Visit the Library Website

‘Building Project’ Tab:

<https://belmontpubliclibrary.net/about/building-committee/>

Visit The Belmont Library Foundation Website

<https://belmontlibraryfoundation.org/>





Ground Floor Plan



Second Floor Plan



BELMONT

PUBLIC

LIBRARY